

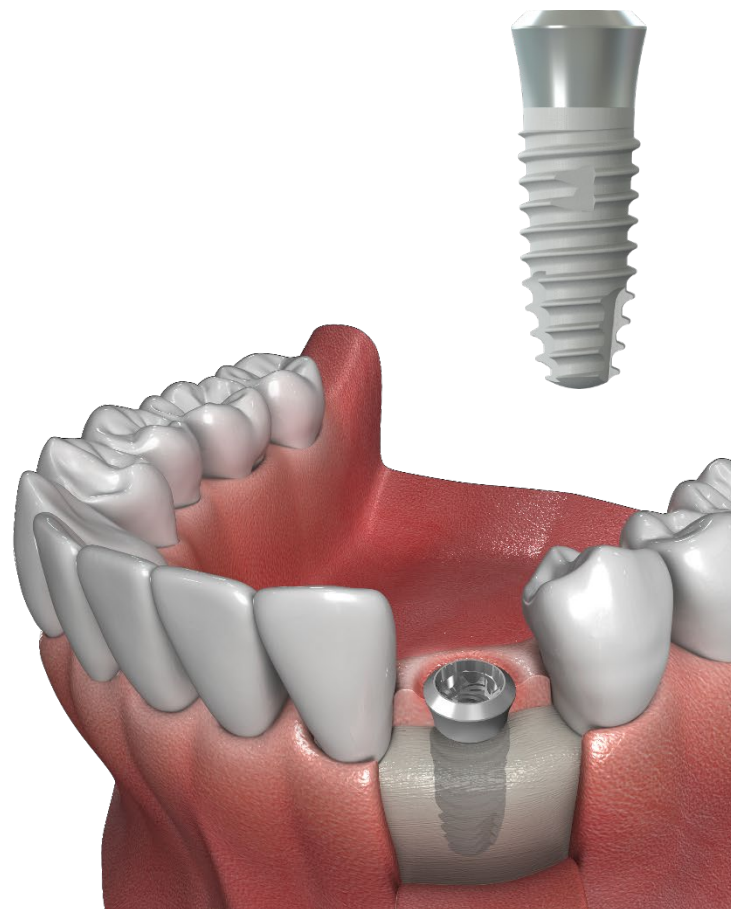


IT-III implant

*2025 Global Top Dental Implant Company

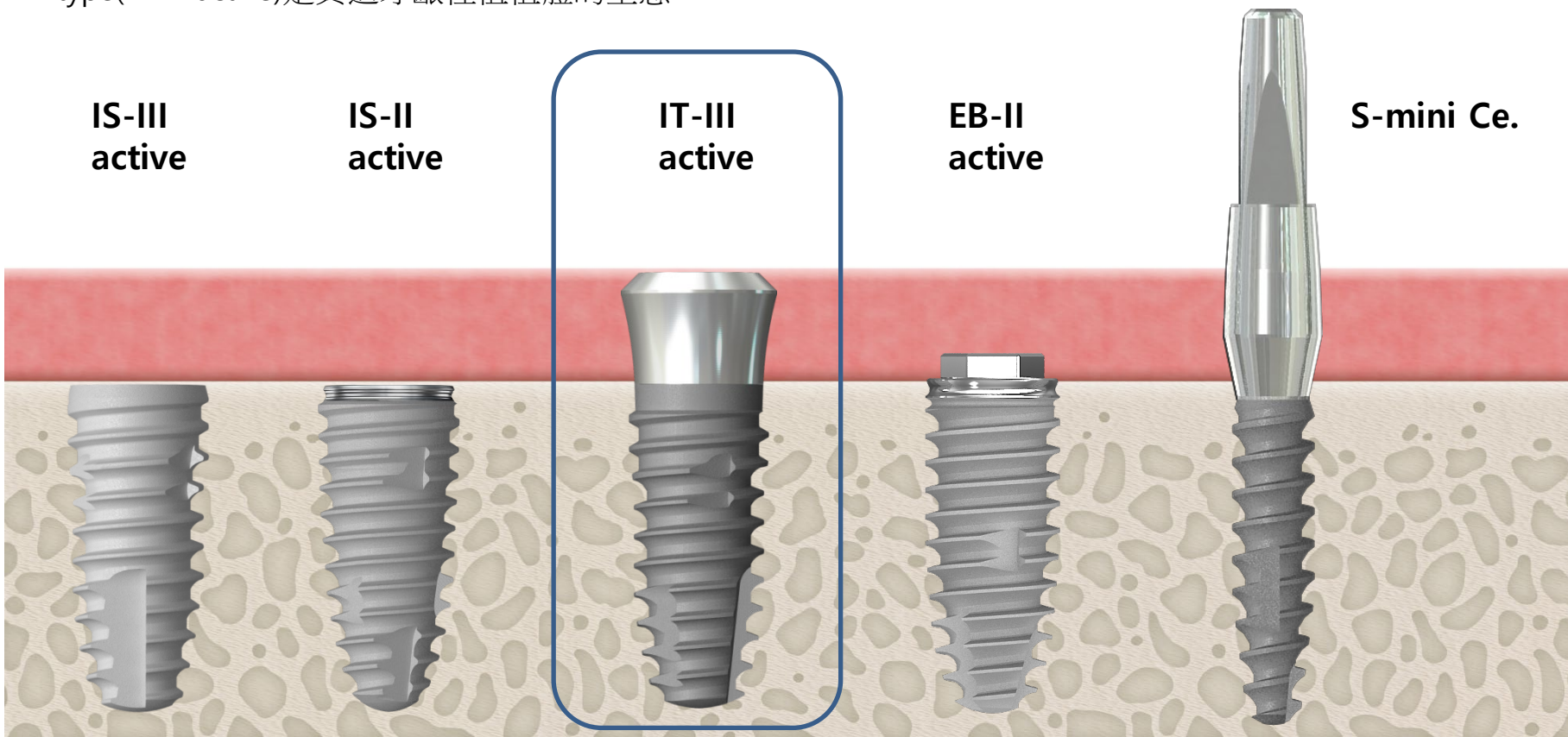
Contents

1. IT type 介紹
2. IT type的特徵及優點
3. IT type的缺點
4. IT-III active
5. 競爭產品
6. Summary及結論



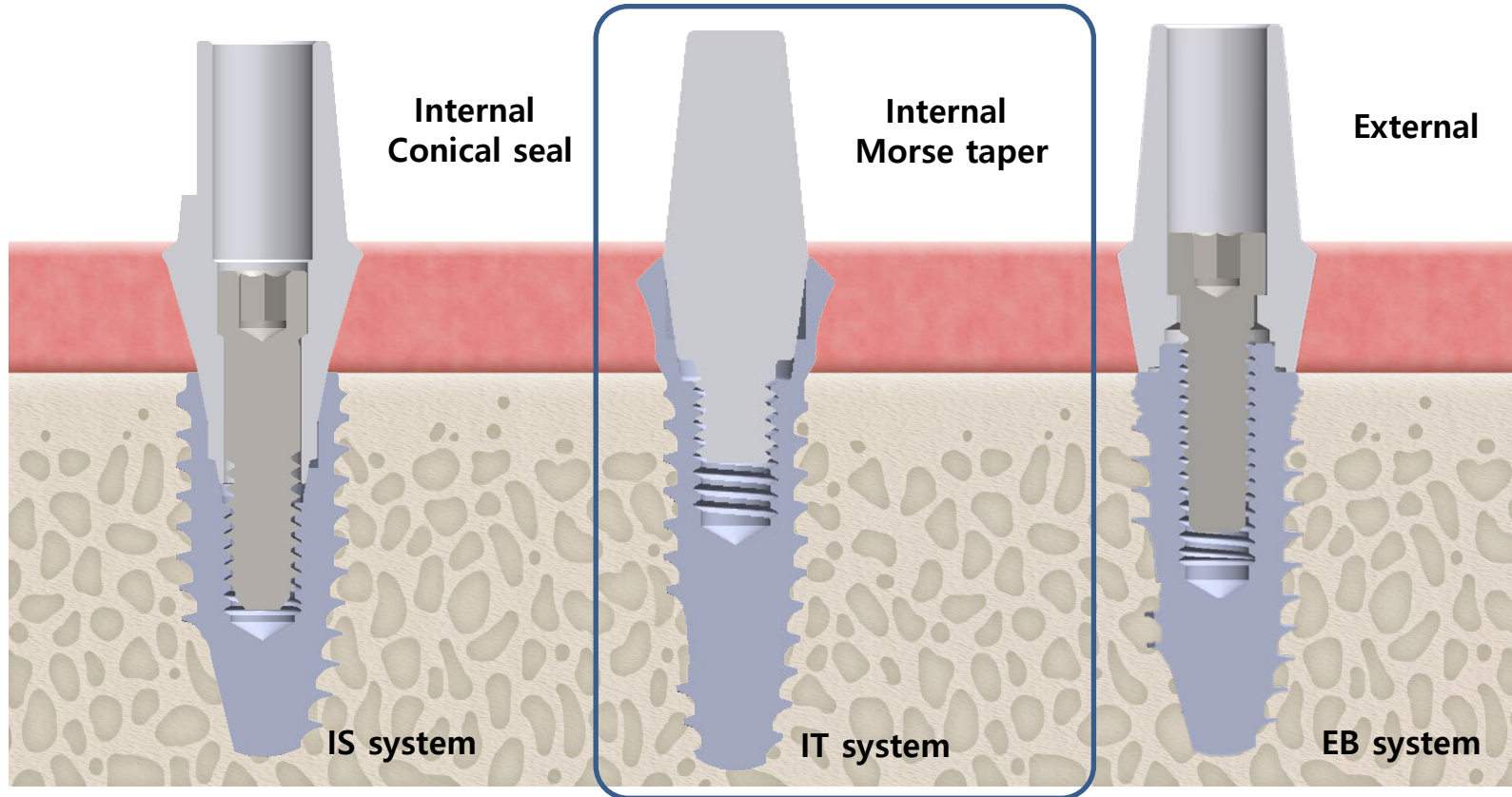
1. IT type介紹

IT type(IT-III active)是貫通牙齦種植植體的型態



1. IT type介紹

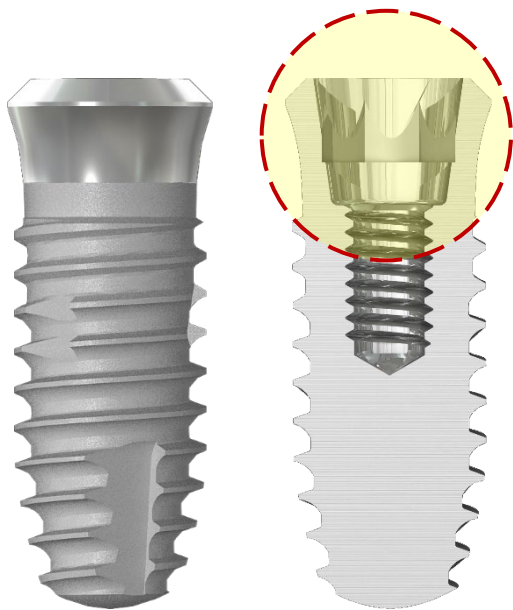
與IS植體種植的方式相同,但 Abutment在牙齦高度連接的構造



1. IT type介紹

IT type是貫通牙齦種植植體的型態

適用於One stage手術法, 種植時超過 Bone level上面



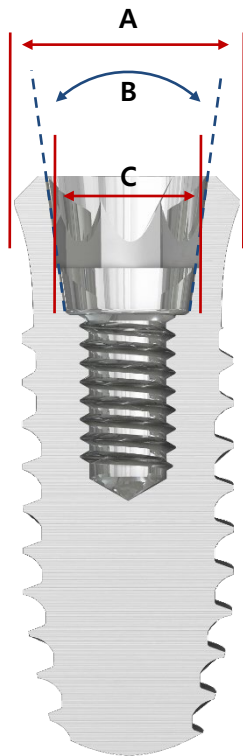
- IT-III active
- **Internal Transmucosal (貫通牙齦) ; IT**
- 3.1 octagon / 8° Morse Taper
⇒ 與Straumann Tissue level相同



一邊角度 8度

- 建議一階手術

1. IT type介紹

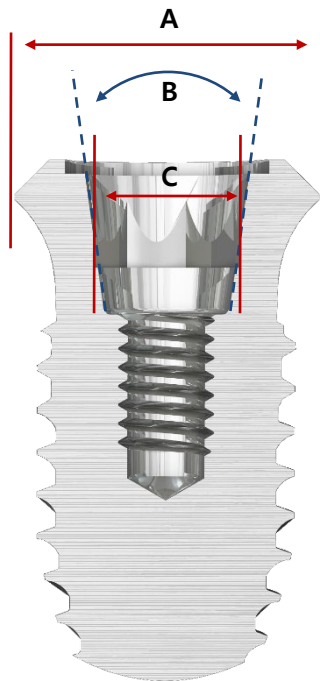


Regular Neck

A : $\text{Ø}4.8$

B : 8° Morse Taper (兩邊 16°)

C : 3.1 Octa



Wide Neck

A : $\text{Ø}6.5$

B : 8° Morse Taper (兩邊 16°)

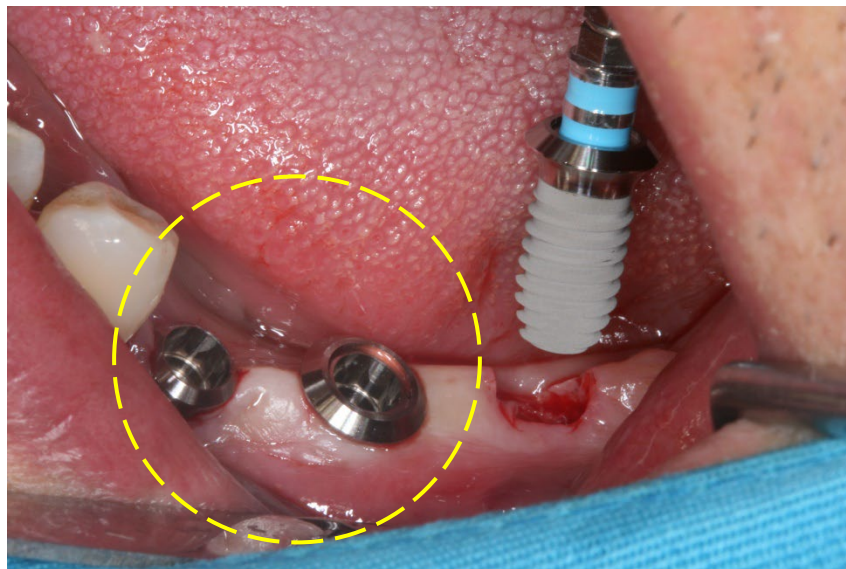
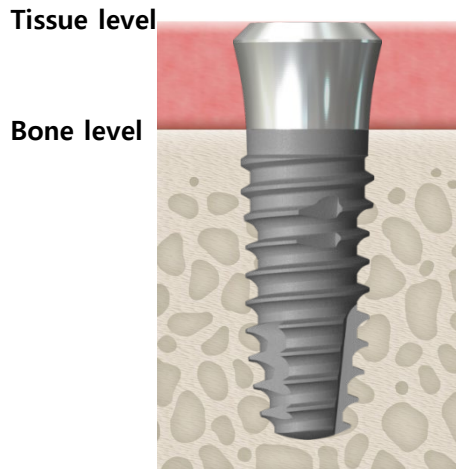
C : 3.1 Octa

✓ WN上端有個台階，所以 RN與WN無法互換

2. IT type的特徵與優點

Fixture植入於Bone level上方；植入於Tissue level

1) 植入於Tissue level

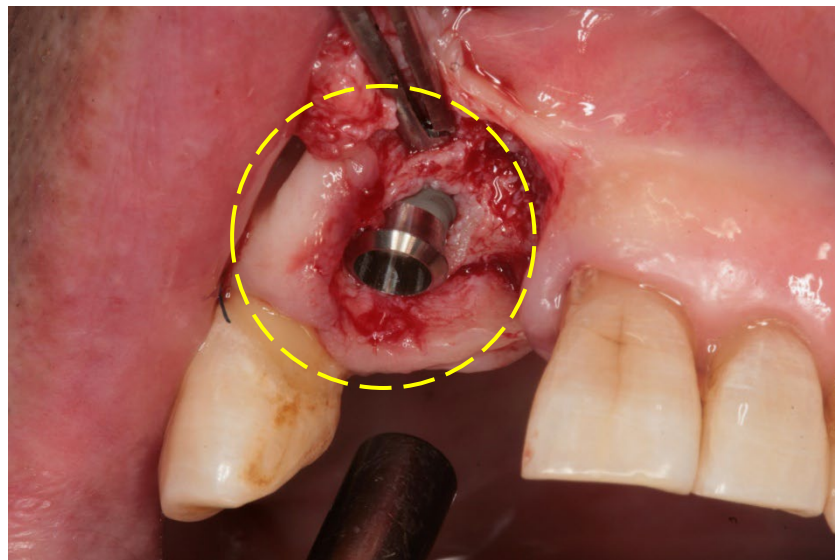
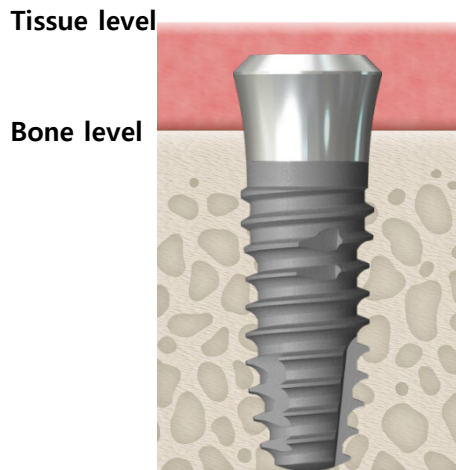


✓ Fixture植入於牙齦高度

2. IT type的特徵與優點

Machined Collar部分植入於 Bone level 下方也無妨

2) 植入深度容易調整



✓ 比Bone level更深植入的 IT-III active

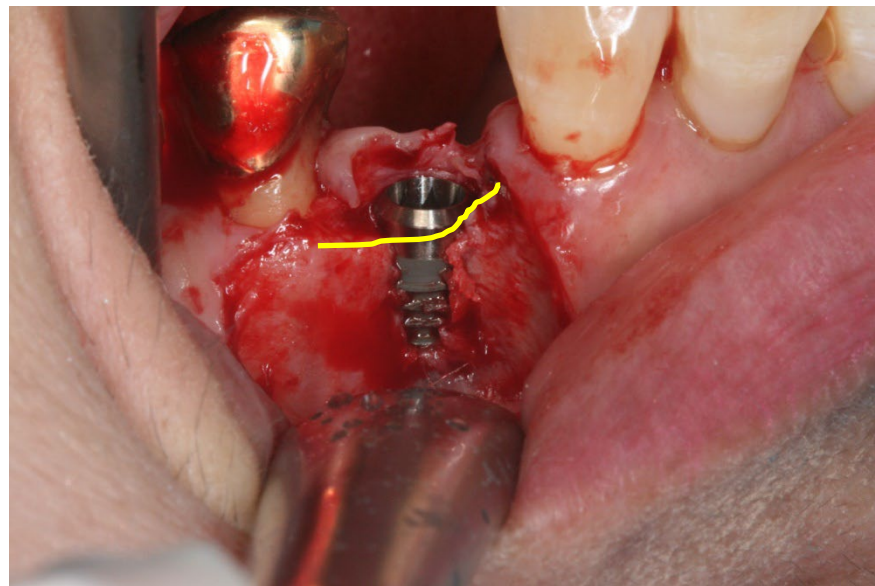
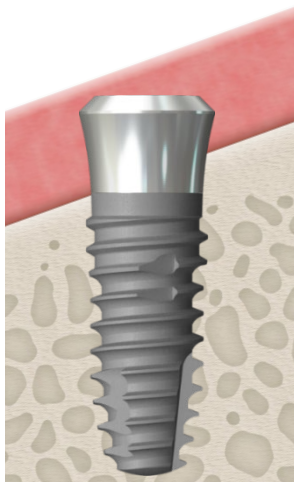
2. IT type的特徵與優點

植入於有斜度的 Bone 也無妨

3) 當 Bone 的高度不相同時適合種植

Tissue level

Bone level

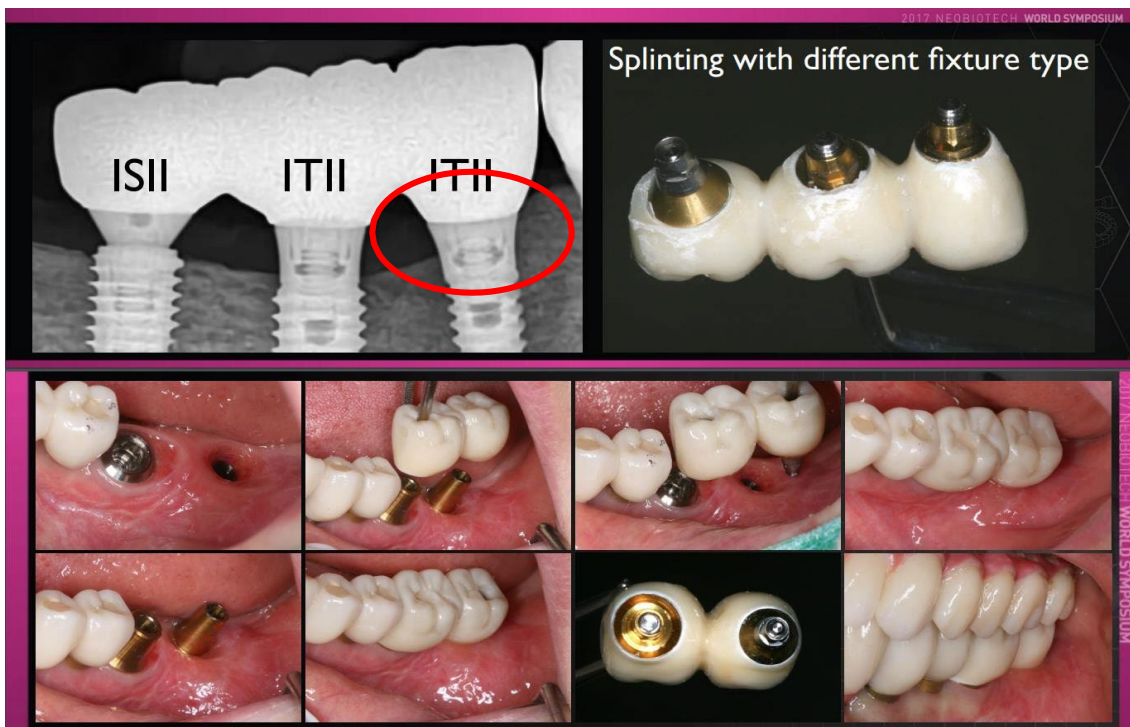


✓ 適合植入於有斜度的 Bone 時, 植入在 Bone 下方

2. IT type的特徵與優點

植入於有斜度的 Bone 也無妨

3) 當 Bone 的高度不相同時適合種植

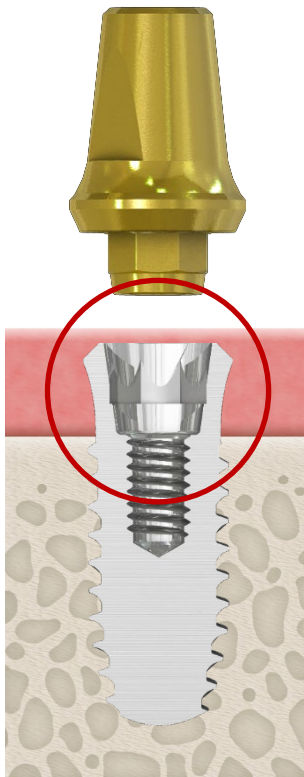


Bone Level有斜度時
利用 IT 植入於 Multi case
補綴物連接容易

2. IT type的特徵與優點

是Internal type,但是 Abutment在 Bone上方連接,容易連接補綴物且維修容易

4) Abutment的連接在 Bone level 上方連接

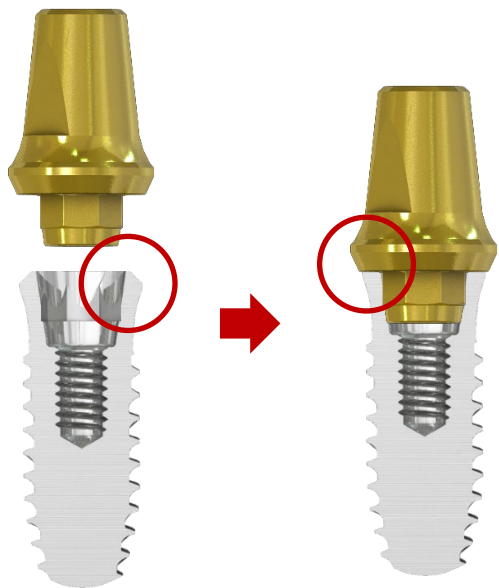


- Internal type
- 在 Tissue level 拆卸Abutment
- 去除多餘黏著劑及維修管理容易

2. IT type的特徵與優點

Abutment的連接部位在 Neck上, 可有效分散力量並有緩衝作用

5) 可有效分散承載力量

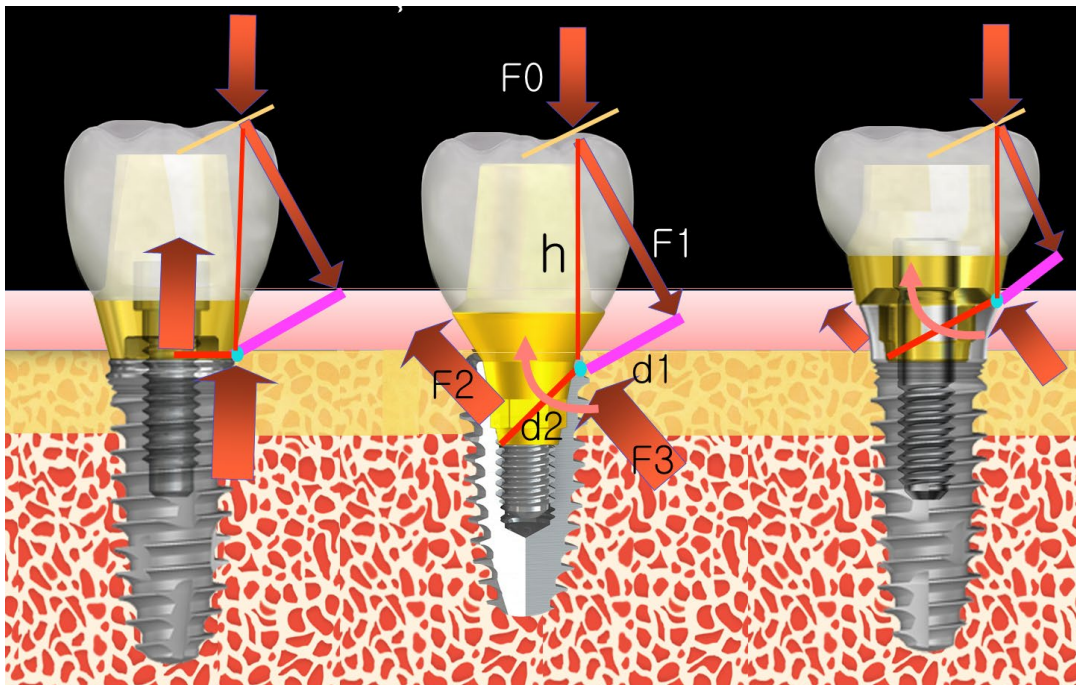


- Abutment與 Fixture連接構造為 Internal方式 Abutment的補綴物負重在Neck部位緩衝一次, 有利於分散負重的結構

2. IT type的特徵與優點

對比 EB, IS 對於Lateral Force有優秀的抵抗力

建議植入於垂直,側方壓力較高的臼齒部



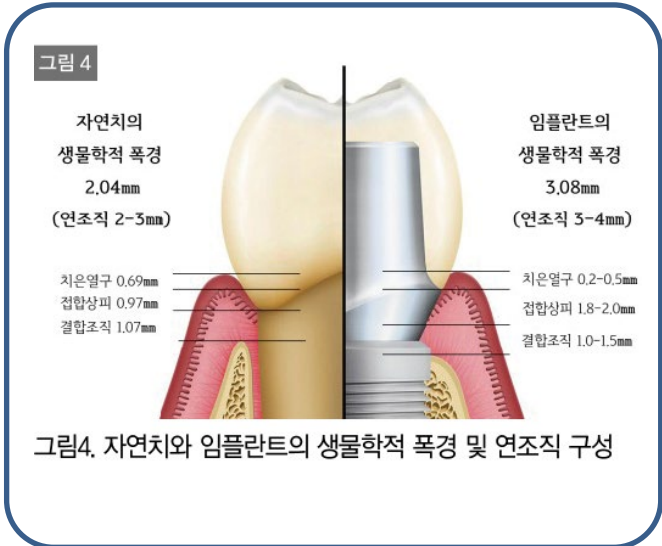
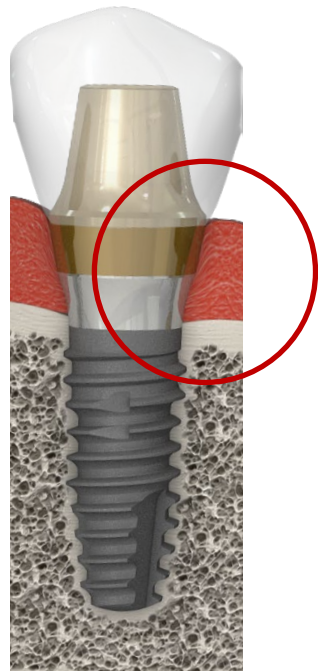
對比 EB, IS type內部構造(外壁)厚
對於補綴物負重相對穩定



2. IT type的特徵與優點

IT type의 Machined Collar讓 Bone與牙冠適當的維持距離,可維持生物學寬度

6) 對於維持生物學寬度(Biological width)有效的結構



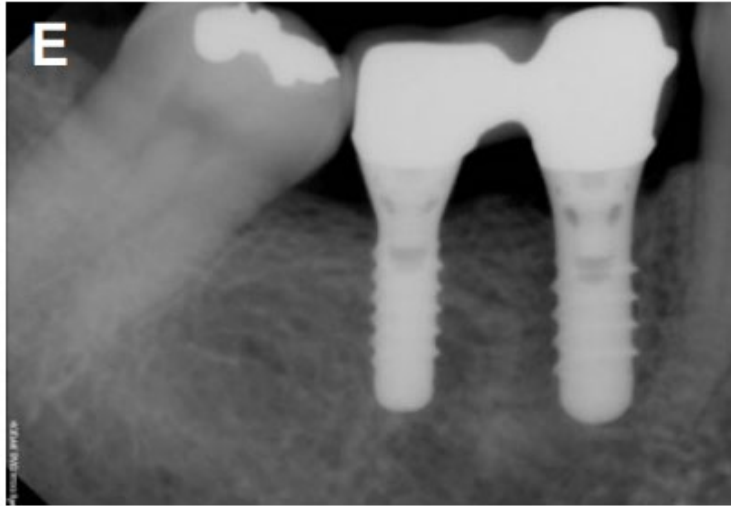
※ Biological width (生物學寬度)

為了防止包圍牙齒的骨頭被外部細菌侵入，在牙齒的頸部（牙冠和牙根的交界處）大約有2~3毫米的上皮和結締組織緊密附著

3. IT type缺點

因植入於Tissue level, 因Bone Loss等問題牙齦的高度變低時, Fixture의 Machined Collar會外露產生問題

1) 審美性不佳

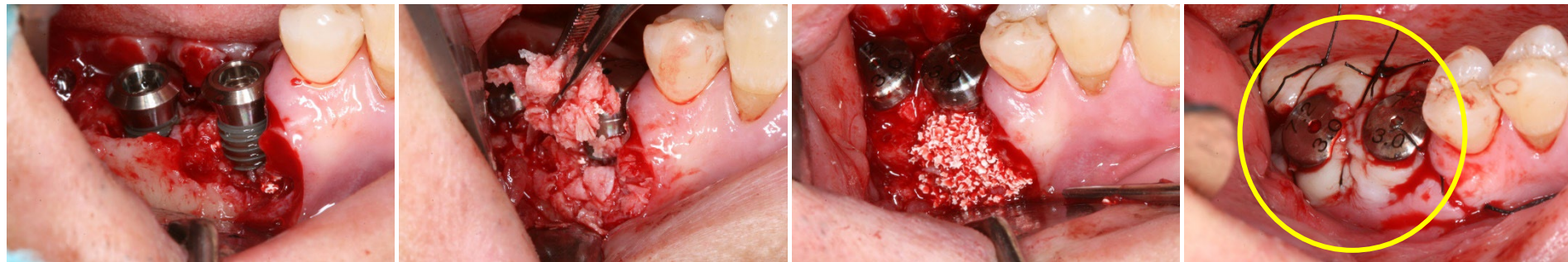


3. IT type缺點

如進行GBR的情況,初期固定不容易故建議 Submerged

IT type的情況 Fixture會露出於口腔內,其他組織或舌頭等力量會持續性的施加負重

2) GBR case有失敗的危險性

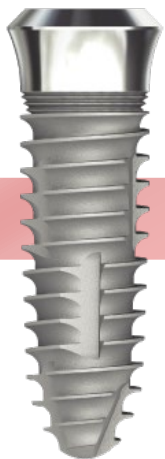


GBR後在骨整合前,一直有力量施加,可能導致骨整合失敗的危險

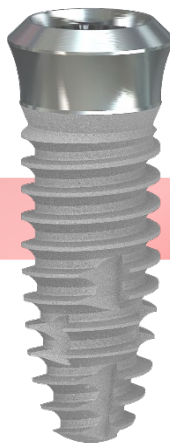
4. IT-III active

IT type的設計變化

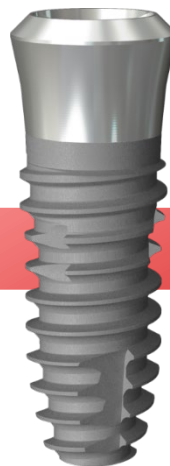
表面處理變化及 G.Collar的多樣化



- IT
 - 2007年上市
 - RBM Surface
 - Micro Thread
 - 1.8G
 - Regular Neck
 - Wide Neck
- (2012年上市)

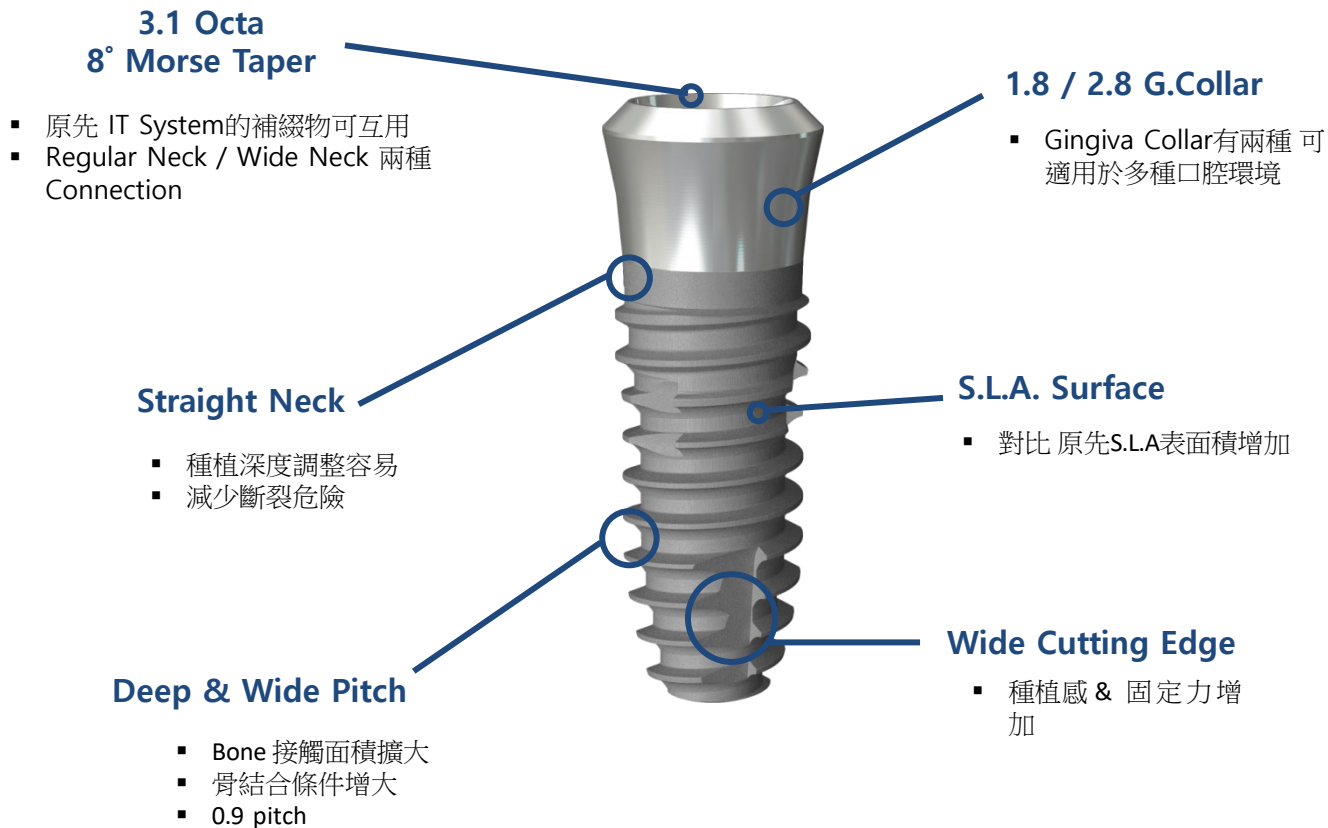


- IT-II active
- 2013年上市
- S.L.A. Surface
- 1.8G
- Regular Neck



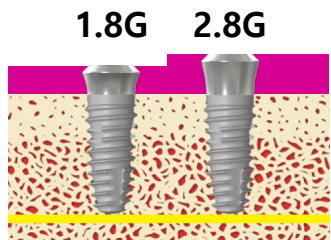
- IT-III active
 - 2018年上市
 - S.L.A. Surface
 - 1.8G / 2.8G
 - Regular Neck
 - Wide Neck
- (2019년 출시)

4. IT-III active



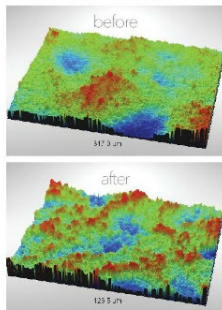
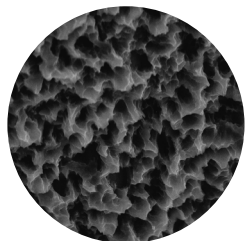
4. IT-III active

1) Gingiva Collar兩種



- ✓ Gingiva collar有 1.8 及 2.8 兩種,適用於不同牙齦高度
- ✓ Regular / Wide neck Connection

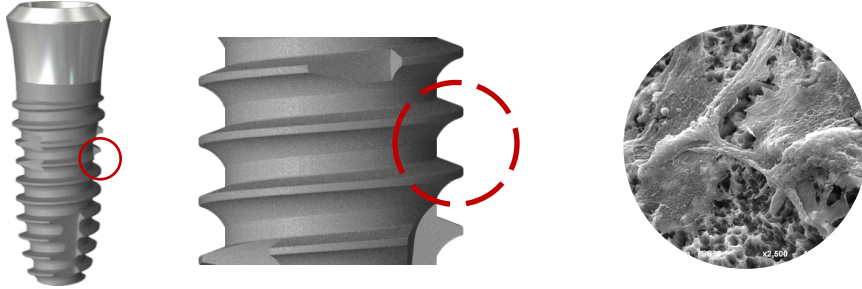
2) S.L.A. Surface



- ✓ S.L.A. (Alumina Blasting)
- ✓ 比起原先 S.L.A.(HA Blasting) 表面積增加 1.4倍
→細胞附著力增加 1.5倍 縮短骨結合能時間

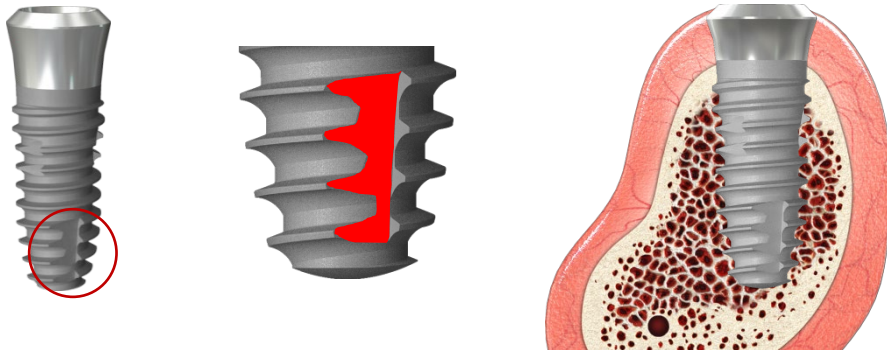
4. IT-III active

3) Deep & Wide Pitch (0.9 Pitch)



- ✓ Thread Pitch與 Bone的接觸面積增加
- ✓ 固定力上升及增加骨結合面積

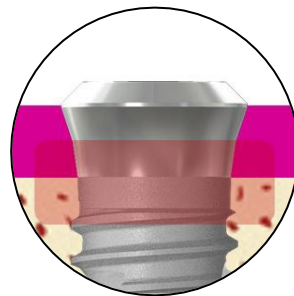
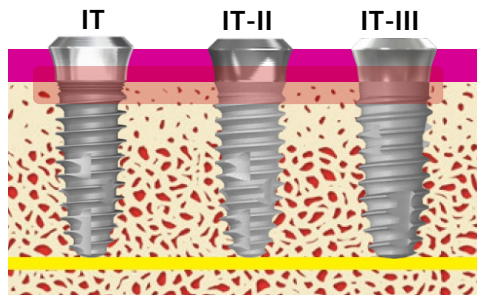
4) Wide Cutting Edge



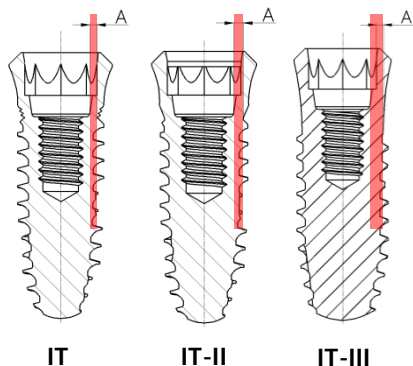
- ✓ Cutting Edge面積增加, 種植感及固定力上升
- ✓ Self Tapping 能力上升
- ✓ 初期固定力增加

4. IT-III active

5) Straight Neck



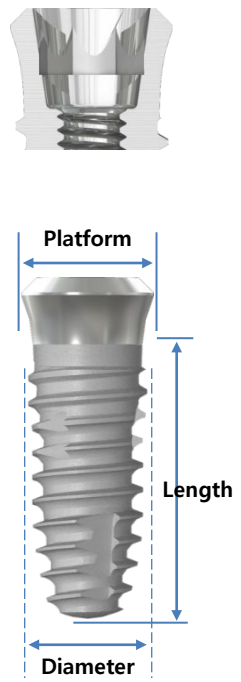
A. Neck Design的變更,改善了植入時,卡在Bone的現象,植體的植入深度調整容易



大小	A		
分類	IT	IT-II	IT-III
Ø3.5	0.183	0.305	0.531
Ø4.0	0.337	0.455	0.603

B. Neck強度改善
預防斷裂危險 (約增加 30%)

4. IT-III active

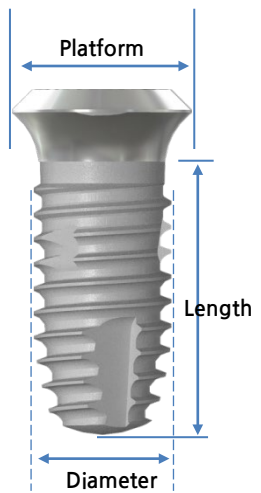


Regular Neck

Diameter	Platform	G.Collar	Length (mm)				
			7.0	8.5	10.0	11.5	13.0
ø3.5	ø4.8						
		1.8		IT313508AP	IT313510AP	IT313511AP	IT313513AP
		2.8		IT323508AP	IT323510AP	IT323511AP	IT323513AP
ø4.0	ø4.8						
		1.8	IT314007AP	IT314008AP	IT314010AP	IT314011AP	IT314013AP
		2.8	IT324007AP	IT324008AP	IT324010AP	IT324011AP	IT324013AP
ø4.5	ø4.8						
		1.8	IT314507AP	IT314508AP	IT314510AP	IT314511AP	IT314513AP
		2.8	IT324507AP	IT324508AP	IT324510AP	IT324511AP	IT324513AP
ø5.0	ø4.8						
		1.8	IT315007AP	IT315008AP	IT315010AP	IT315011AP	IT315013AP
		2.8	IT325007AP	IT325008AP	IT325010AP	IT325011AP	IT325013AP

※ Cover Screw not included

4. IT-III active



Diameter	Platform	G.Collar	Length (mm)				
			7.0	8.5	10.0	11.5	13.0
Ø5.0	Ø6.5						
		1.8	ITW315007AP	ITW315008AP	ITW315010AP	ITW315011AP	ITW315013AP
		2.8	ITW325007AP	ITW325008AP	ITW325010AP	ITW325011AP	ITW325013AP
Ø5.5	Ø6.5						
		1.8	ITW315507AP	ITW315508AP	ITW315510AP	ITW315511AP	ITW315513AP
		2.8	ITW325507AP	ITW325508AP	ITW325510AP	ITW325511AP	ITW325513AP
Ø6.0	Ø6.5						
		1.8	ITW316007AP	ITW316008AP	ITW316010AP	ITW316011AP	ITW316013AP
		2.8	ITW326007AP	ITW326008AP	ITW326010AP	ITW326011AP	ITW326013AP

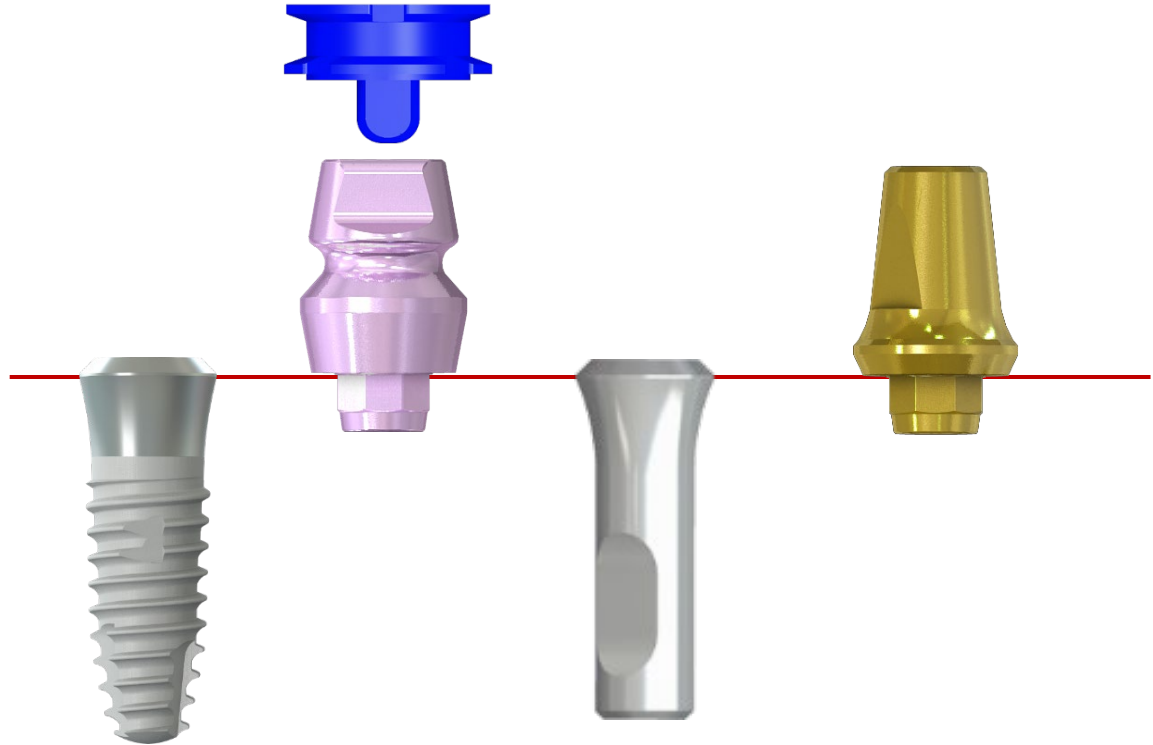
Wide Neck

※ Cover Screw not included

4. IT-III active

Fixture(shoulder) Level Impression

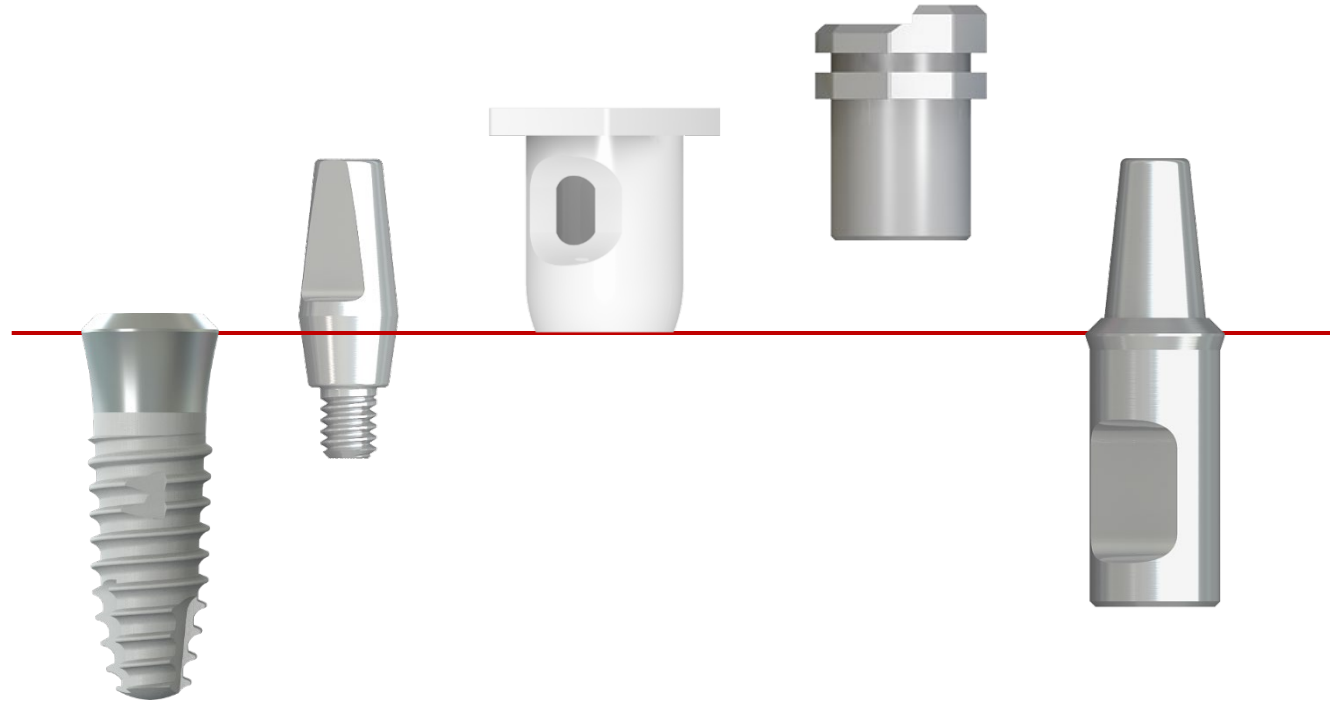
IT-III active 植入 -> PickCap Impression(Pick up or Transfer) -> Analag -> Cement Abutment



4. IT-III active

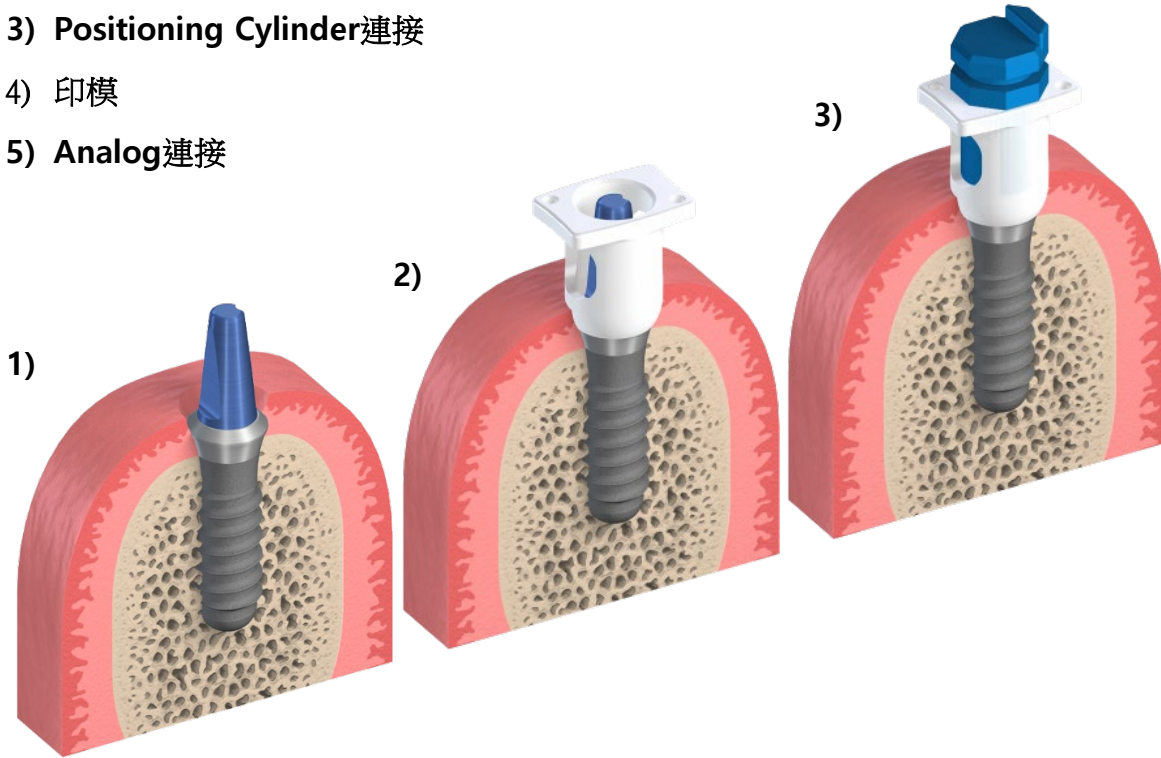
Abutment Level Impression

IT-III active 植入 -> Solid Abutment -> Impression Cap -> Positioning Cylinder -> Analog



※ Solid Abutment 沒有Milling的情況

- 1) Solid Abutment 連接
- 2) Impression Cap連接
- 3) Positioning Cylinder連接
- 4) 印模
- 5) Analog連接



※ Solid Abutment Milling的情況

Abutment的形狀以變形,為了呈現原有的部分,連接 **Positioning Cylinder**後取得印模



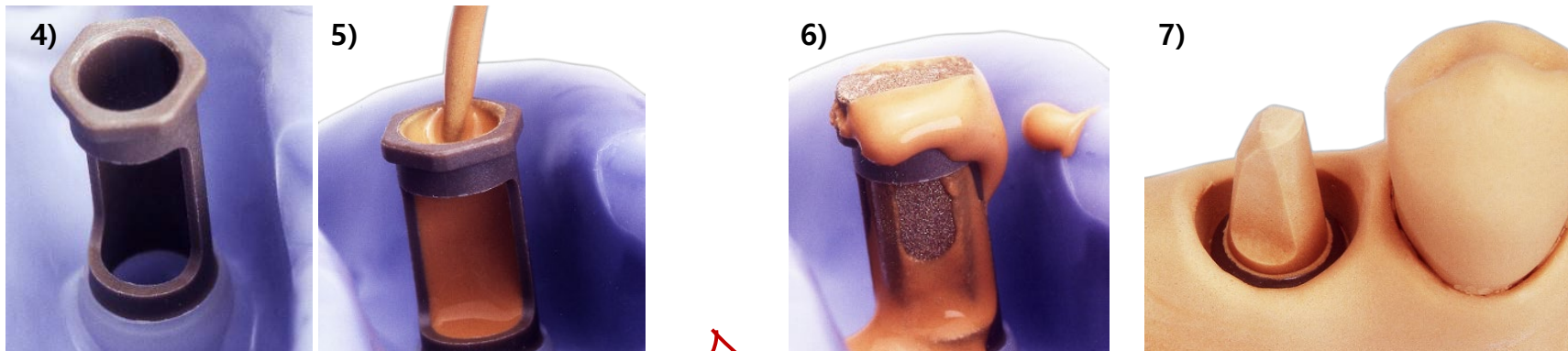
1) Solid Abutment Milling (Modify)

2) Impression Cap 連接

3) 注入印模材 / 取得印模

※ Solid Abutment Milling的情況

印模上與 Shoulder Analog的 Shoulder部分連接後,注入石膏再連接Analog,可製作石膏模型

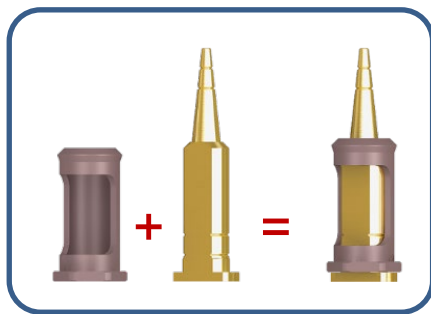


4) Shoulder 連接

5) 注入石膏

6) Analog 連接

7) 製作石膏模型



※ Shoulder Analog

Shoulder與Analog 兩個部分構成

Analog的 post部分高度,Milling後可使用

※ SUMMARY

- IT type是Internal Transmucosal產品，通過牙齦進行植入，屬於1 stage手術方式的植牙產品。
- 具有8° Morse Taper和3.1 octa的内部結構
- 區分為Regular Neck和Wide Neck，彼此之間的**贖復體不相容**
- **在骨骼傾斜的地方植入容易**，並且植入深度調節方便，因此可以將Machined Collar部分植入至Bone level下方
- Abutment在Bone level上固定，**方便贖復體的維護及拆卸**，有利於承受咬合力，因此適合在像臼齒區這種受力較大的部位植入
- 如果Machined Collar暴露在外，可能會影響美觀，在GBR情況下，可能無法充分實現骨整合
- IT-III active相比現有產品，通過改進表面處理方式和設計，最大化了IT type的優勢
- **Straumann**的Tissue Level、**Dentium**的SimpleLine II、**MegaGen**的AnyOne Onestage產品與自家的IT-III active贖復體相容，而**Osstem**的SS II / SS III產品則只有**Regular Neck Non Octa(Solid)**贖復體相容

*Thank
you*

Neo
Biotech
Satisfaction to Dentists

