



---

# Ridge Wider Kit

---

\*2025 Global Top Dental Implant Company

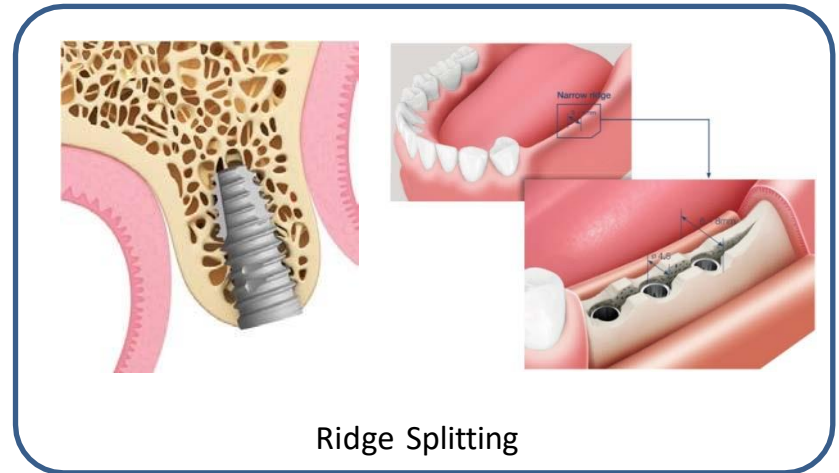
**Neo**  
**Biotech**  
Satisfaction to Dentists

## 骨擴寬手術盒(Ridge Wider Kit)

把狹窄的牙槽骨對半劈開擴寬後進行植牙手術,由於植牙手術時比GBR更簡單和穩定,很受歡迎的手術方式



VS



## GBR vs Ridge splitting



GBR

- **Vertical , horizontal augmentation**
- 可按照手術者的意願來擴大骨的方向與大小
- 血流可能會偏一邊,骨形成可能受限制
- 手術有難度
- 手術時需要一些附加的材料 (membrane 等)
- 骨粉能難成為BONE

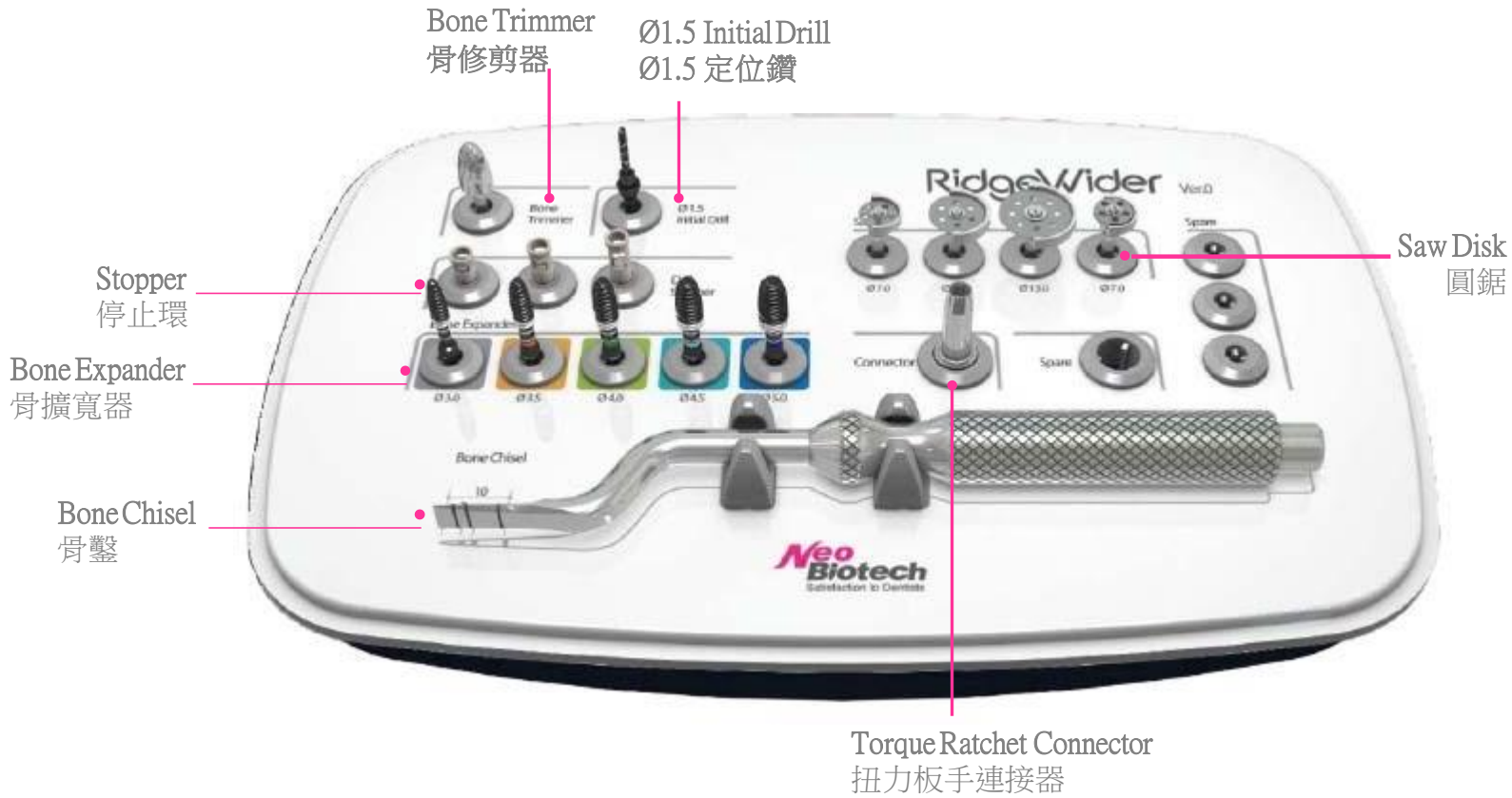


Ridge splitting

- **horizontal augmentation**
- 比起GBR,手術比較簡單
- 可讓血流方向均勻,對骨形成有利
- 手術較簡單
- 對比GBR,相對難抓BONE的形狀
- 剝開的骨頭,有可能斷裂的危險

## 骨擴寬手術盒(Ridge Wider Kit)

### 結構



## 骨擴寬手術盒(Ridge Wider Kit)

### 配件說明 : **Bone Trimmer(骨修剪器)**



用於把齒槽骨面做平

- 使用側邊刀刃在很短的時間能修剪
- 1,200~2000rpm

### Ø1.5 Initial Drill & Stopper (Ø1.5定位鑽和停止環)



由於骨擴寬前進行定位鑽孔

- 使用圓鋸和骨擴寬器之前選定位置和進行定位鑽孔
- 1,200rpm
- 停止環長度 : 3/5/7 mm

## 骨擴寬手術盒(Ridge Wider Kit)

### 配件說明 : Saw Disk –Disk Type(圓鋸)- 圓式



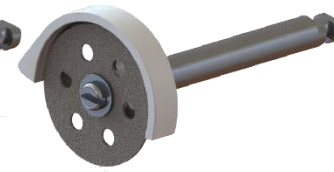
用於破開狹窄的齒槽骨

- 為了安全性實現了圓盤形式
- 通過濺鍍金光石粉末,改善了切削性能
- 1,200rpm

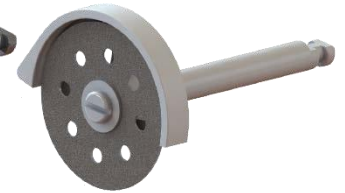
Ø7.0mm, T0.35mm



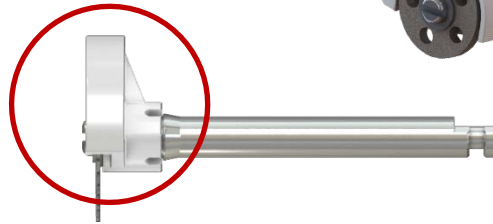
Ø10.0mm, T0.35mm



Ø13.0mm, T0.35mm



Ø7.0mm, T1.0mm



Ø7.0mm, T1.0mm

使用於擴寬齒槽骨前

-切下頰底部1mm厚度後擴大齒槽骨,防止牙槽骨的骨折

## 骨擴寬手術盒(Ridge Wider Kit)

### 配件說明 : Saw Disk –Disk Type(圓鋸)- 鋸齒式



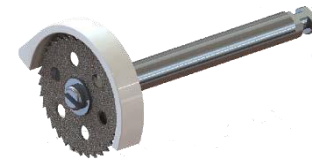
用於破開狹窄的齒槽骨(選項)

- 為了安全性實現了圓盤形式
- 通過濺鍍金光石粉末,改善了切削性能
- 1,200rpm

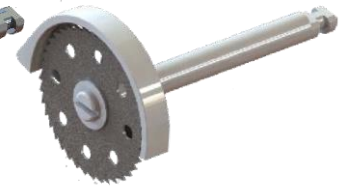
Ø7.0mm, T0.28mm



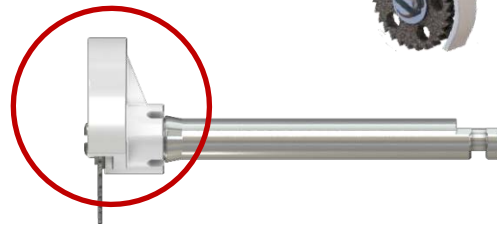
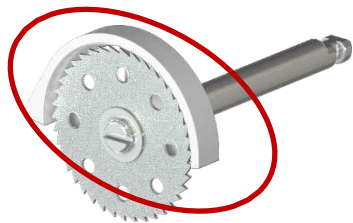
Ø10.0mm, T0.28mm



Ø13.0mm, T0.28mm



Ø7.0mm, T1.0mm



Ø7.0mm, T1.0mm

使用於擴寬齒槽骨前

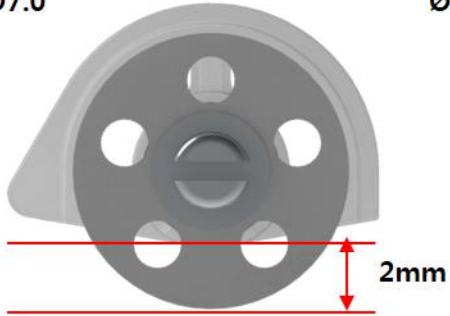
- 切下頰底部1mm厚度後擴大齒槽骨,防止牙槽骨的骨折

## 骨擴寬手術盒(Ridge Wider Kit)

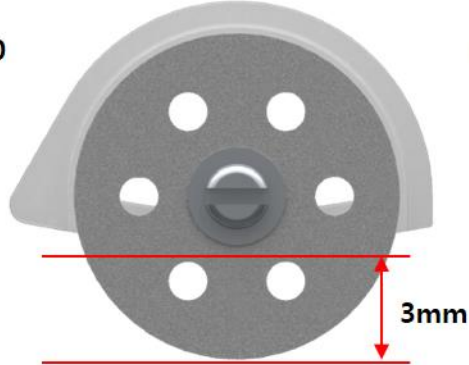
### 配件說明 : **Saw Disk –Disk Type(圓鋸)**

#### ▪ Safe Disk (Non-Saw Type)

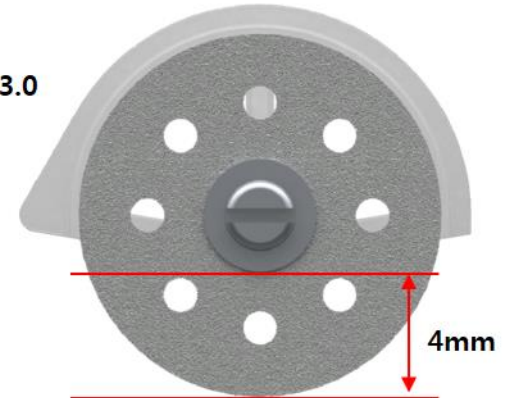
Ø7.0



Ø10.0

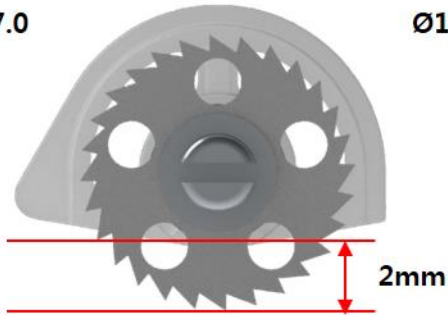


Ø13.0

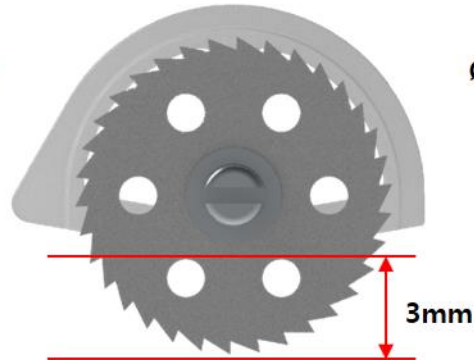


#### ▪ Safe Disk (Saw-Type)

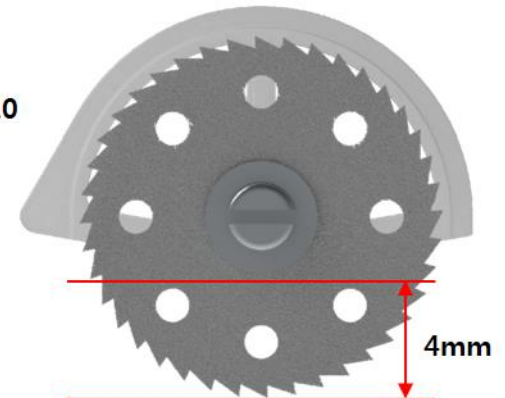
Ø7.0



Ø10.0



Ø13.0





## 骨擴寬手術盒(Ridge Wider Kit)

### 配件說明 : Bone Chisel(骨鑿)



用於初步擴寬

- 使用圓鋸後插入間隙輕輕地擴展的時候
- 使用圓鋸不能完全破開時

### Bone Expander(骨擴寬器)



用於擴寬齒槽骨

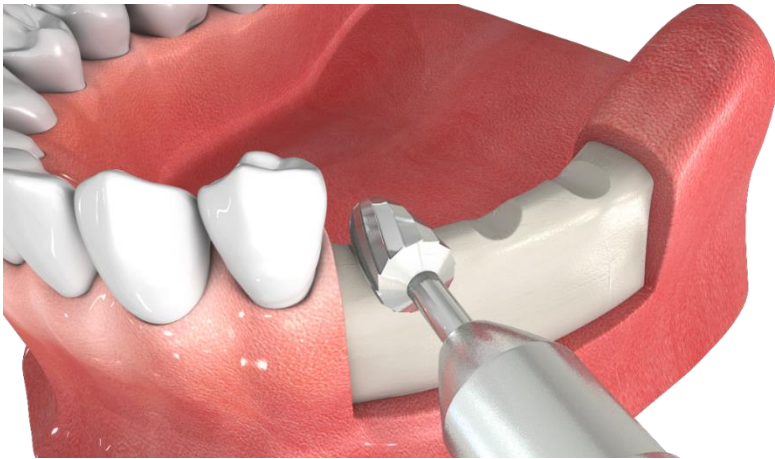
- 把骨擴寬器插入到齒槽骨的定位地點後擴展
- 骨擴寬器的規格配合植體的直徑
- $\varnothing 3.0 / \varnothing 3.5 / \varnothing 4.0 / \varnothing 4.5 / \varnothing 5.0$  mm
- 25~35rpm

## 骨擴寬手術盒(Ridge Wider Kit) 流程



### 1. Narrow Ridge Case

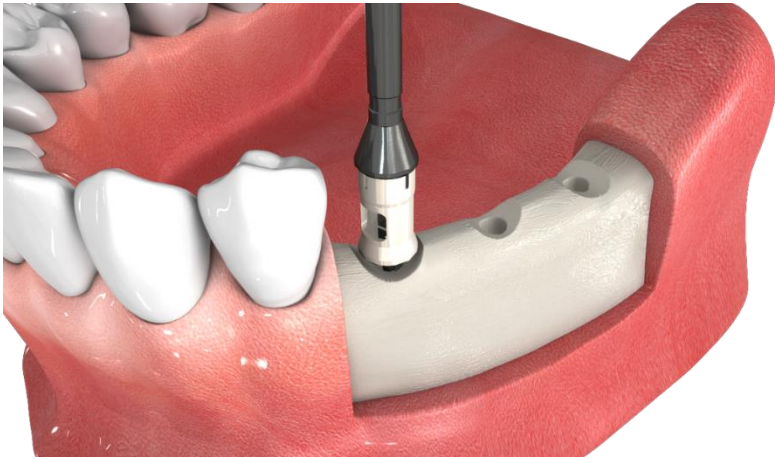
確認植牙位置



### 2. Bone Trimming

使用Bone Trimmer把骨頭修平  
( rpm : 1,200)

## 骨擴寬手術盒(Ridge Wider Kit) 流程



### 3. Initial Drilling

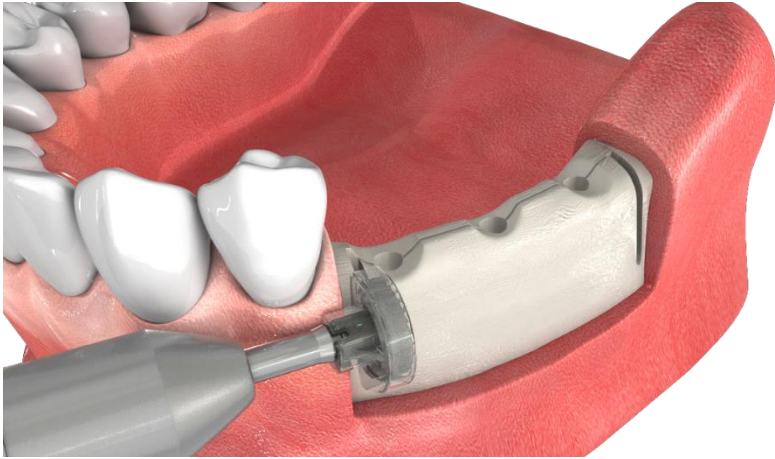
Ø 1.5 Initial Drill 連接 Stopper 後進行 Drilling  
(建議 rpm : 1,200)



### 4. Vertical Sawing

使用 Safe Disk 切開骨頭中央部位  
(建議 rpm : 1,200~2,000)

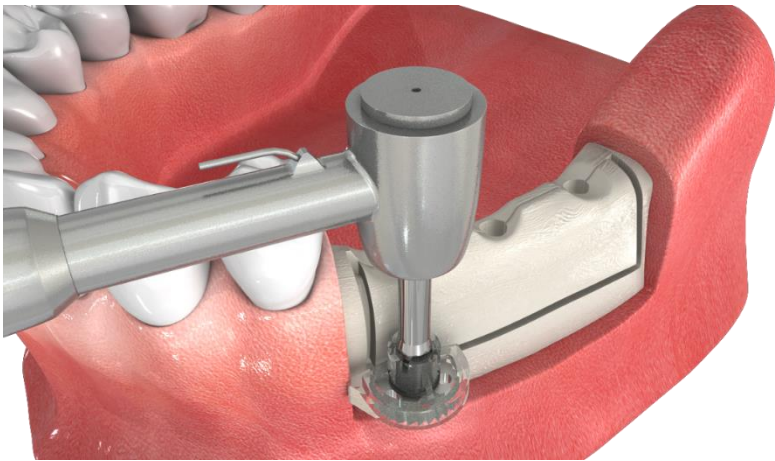
## 骨擴寬手術盒(Ridge Wider Kit) 流程



### 5. Buccal Sawing

使用Safe Disk把 Buccal側切開  
(建議 rpm : 1,200~2,000)

※ 必要時下面部分用 **T1.0mm** Safe Disk切開  
(Buccal 下面部分切開時使用  $\varnothing 7.0\text{mm}$ , T1.0mm Safe Disk)

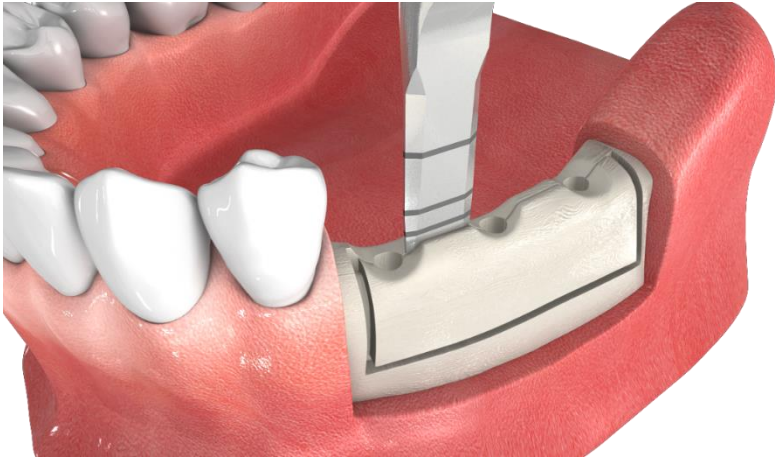


### 6. Buccal Sawing

使用Safe Disk把 Buccal 下面部分切開  
(建議 rpm : 1,200~2,000)

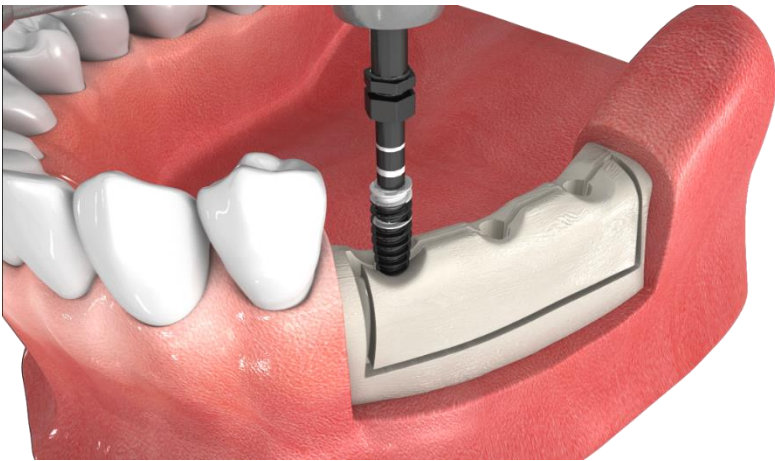
※ 必要時下面部分用 **T1.0mm** Safe Disk切開  
(Buccal 下面部分切開時使用  $\varnothing 7.0\text{mm}$ , T1.0mm Safe Disk)

## 骨擴寬手術盒(Ridge Wider Kit) 流程



### 7. Initial Expansion With Bone Chisel

骨頭被Cutting的部分,骨與骨之間用 Bone Chisel  
把骨頭 Split

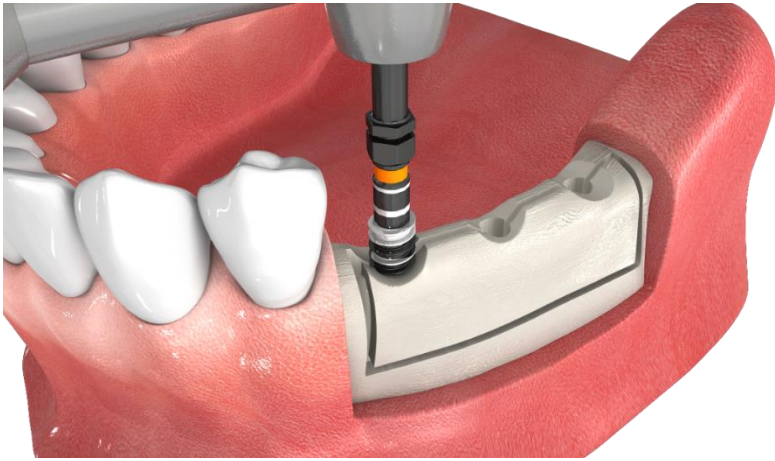


### 8. Sequential Bone Expanding

使用Bone Expander,按照符合Fixture Size漸進式的使用 Bone  
Expansion來擴開骨頭  
(建議 rpm : 25~35)

※ Ø3.5 Fixture 植入時請使用到 Ø3.0 Bone Expander  
(白齒部 Fixture 植入時,建議使用Ø4.5以上的 Fixture)

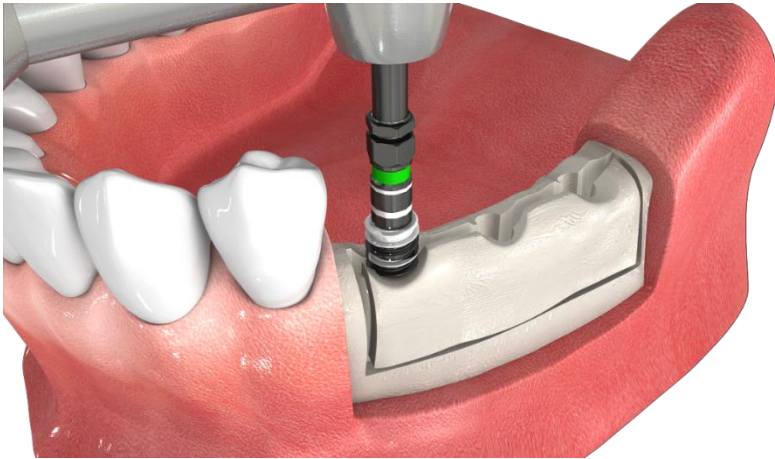
## 骨擴寬手術盒(Ridge Wider Kit) 流程



### 9. Sequential Bone Expanding

使用Bone Expander,按照符合Fixture Size漸進式的使用 Bone Expansion  
來擴開骨頭

(建議 rpm : 25~35)

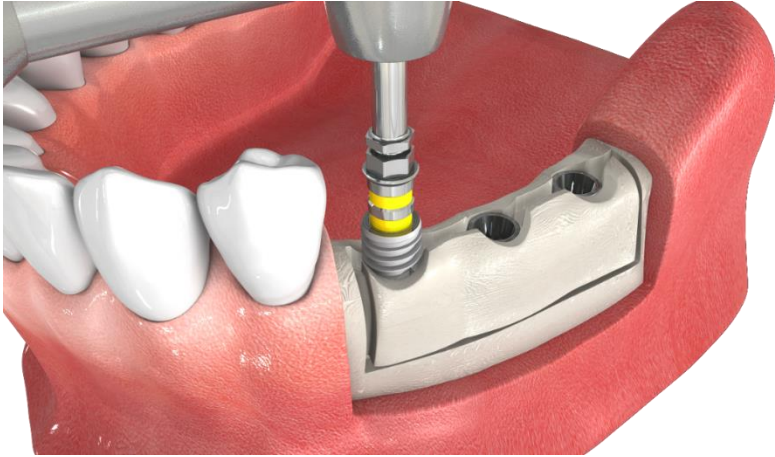


### 10. Sequential Bone Expanding

使用Bone Expander,按照符合Fixture Size漸進式的使用 Bone Expansion  
來擴開骨頭

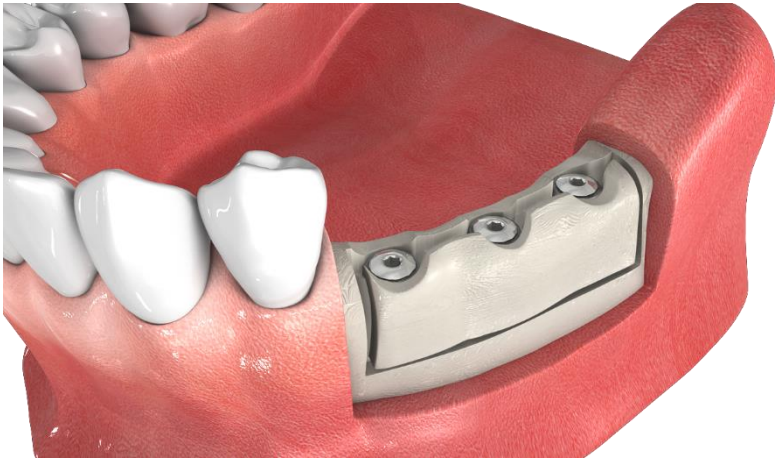
(建議 rpm : 25~35)

## 骨擴寬手術盒(Ridge Wider Kit) 流程



### 11. Implant Placement

在分開的部位上植入植體



### 12. Connect Cover Screw

使用1.2 Hex Driver連接 Cover Screw

## 骨擴寬手術盒(Ridge Wider Kit) 流程



### 13. Application of graft material

Fixture種植後,在擴張的空間作Bone graft. (option)



### 14. Complete

用Fixing Screw固定(option)

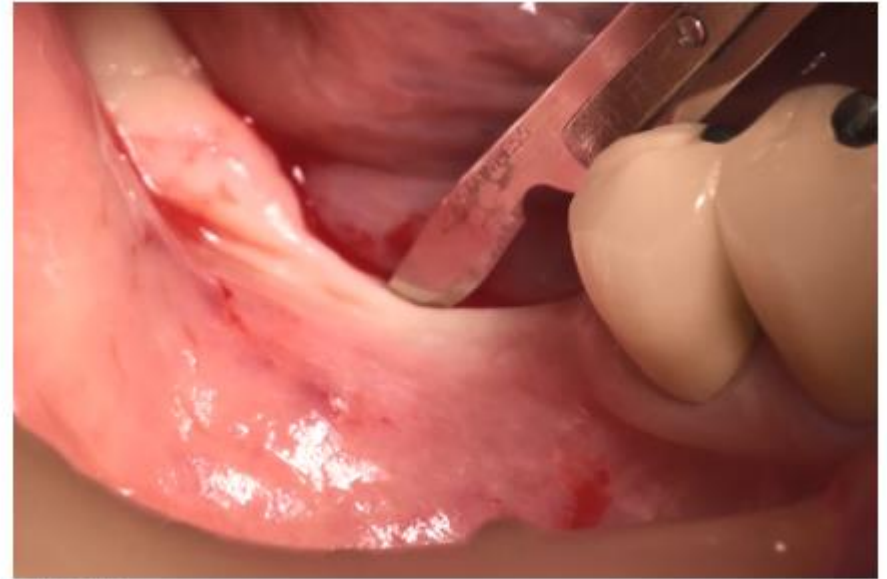


## 骨擴寬手術盒(Ridge Wider Kit)

### 臨床病例



Intra-oral photograph

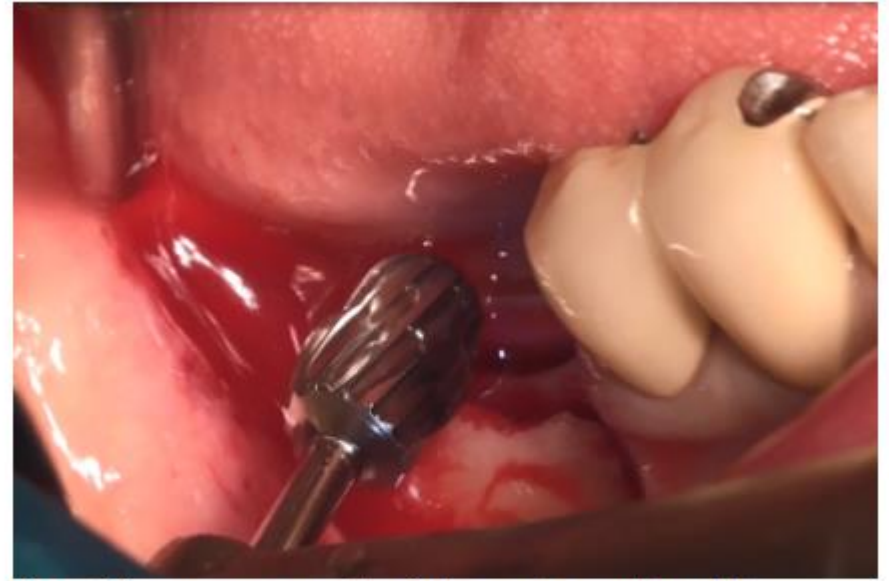
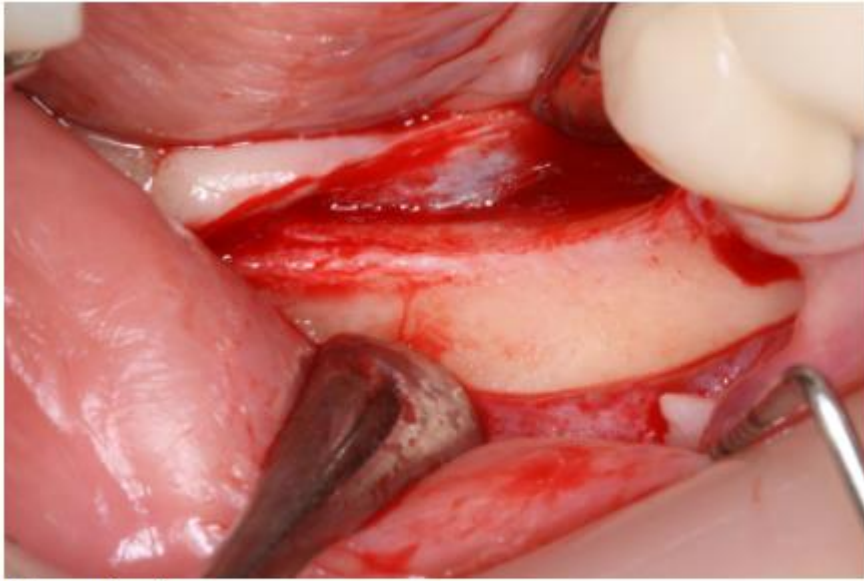


Incision

### 切開牙齦

骨擴寬手術盒(Ridge Wider Kit)

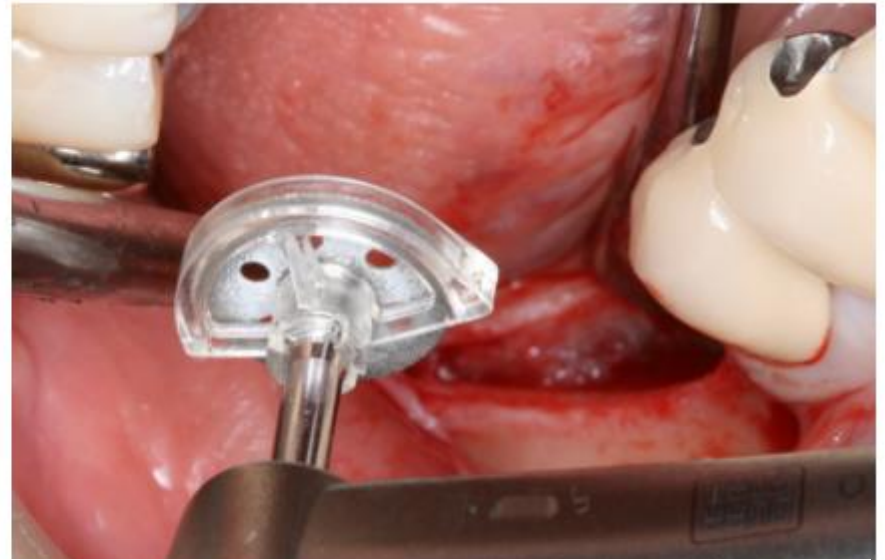
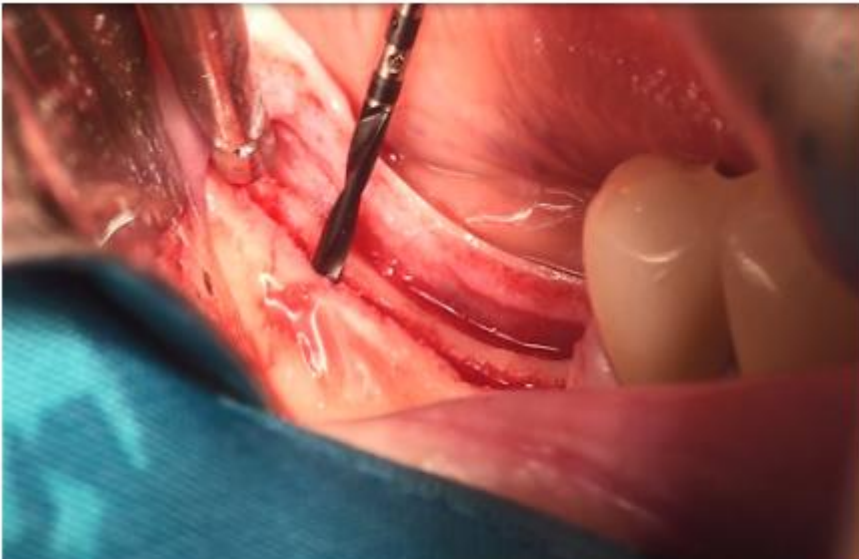
臨床病例



Bone Trimming

骨擴寬手術盒(Ridge Wider Kit)

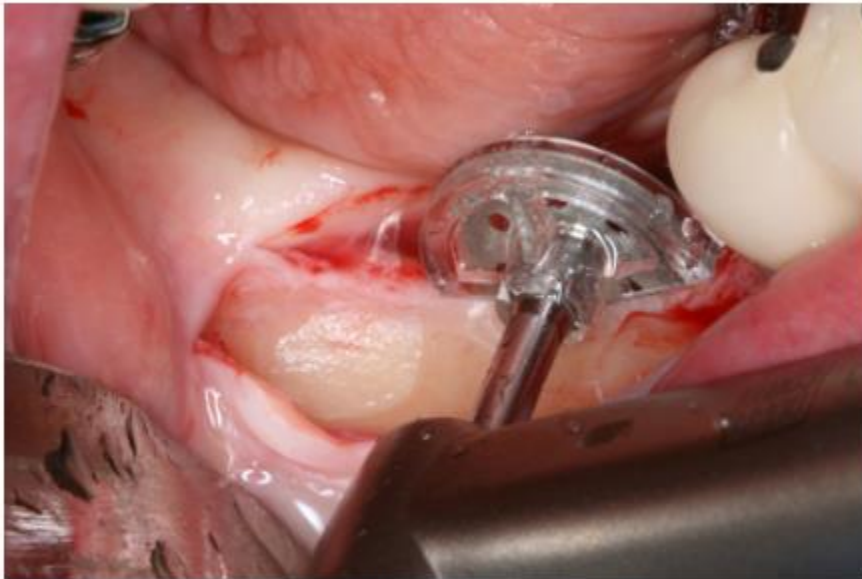
臨床病例



植牙位置Drilling / Safe Disk Cutting

骨擴寬手術盒(Ridge Wider Kit)

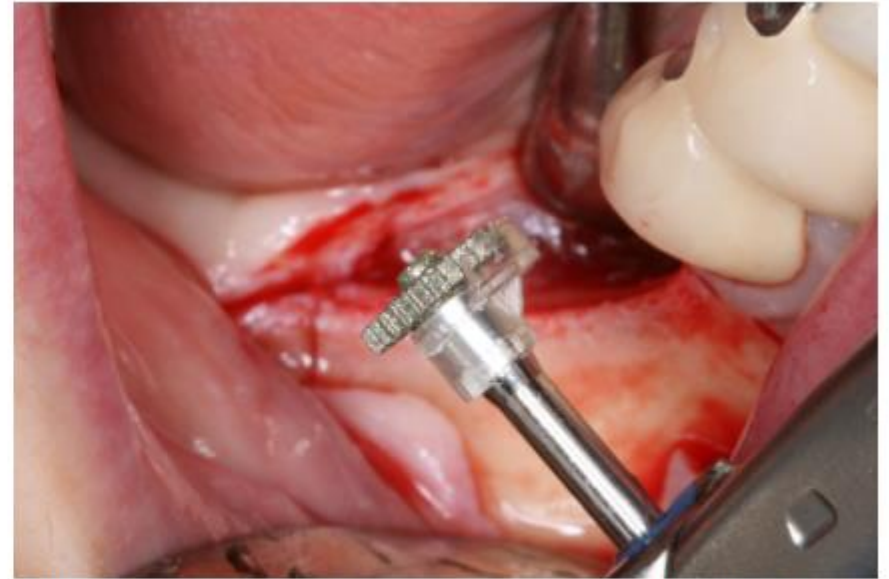
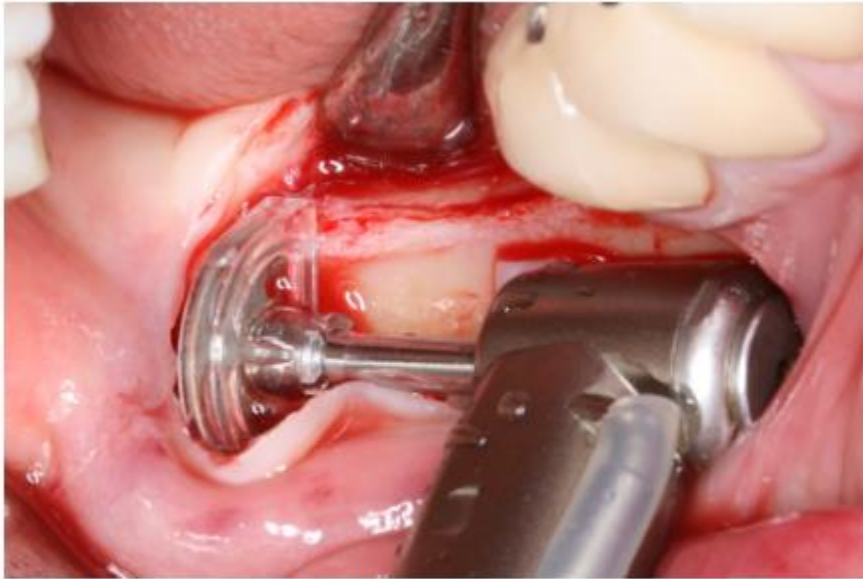
臨床病例



1200rpm Cutting / Buccal側Cutting - 防止Bone斷裂

## 骨擴寬手術盒(Ridge Wider Kit)

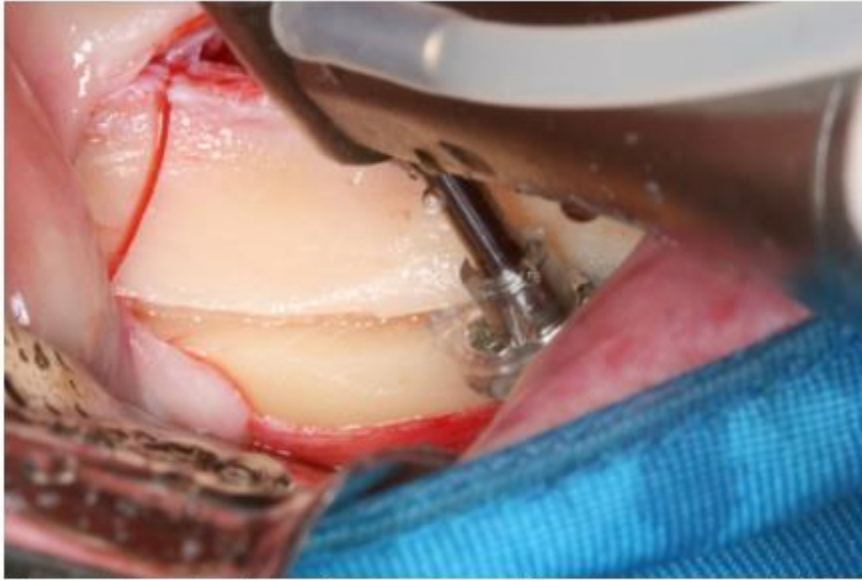
### 臨床病例



Buccal側Cutting時 - 使用**ø7.0, T1.0 Safe Disk**

骨擴寬手術盒(Ridge Wider Kit)

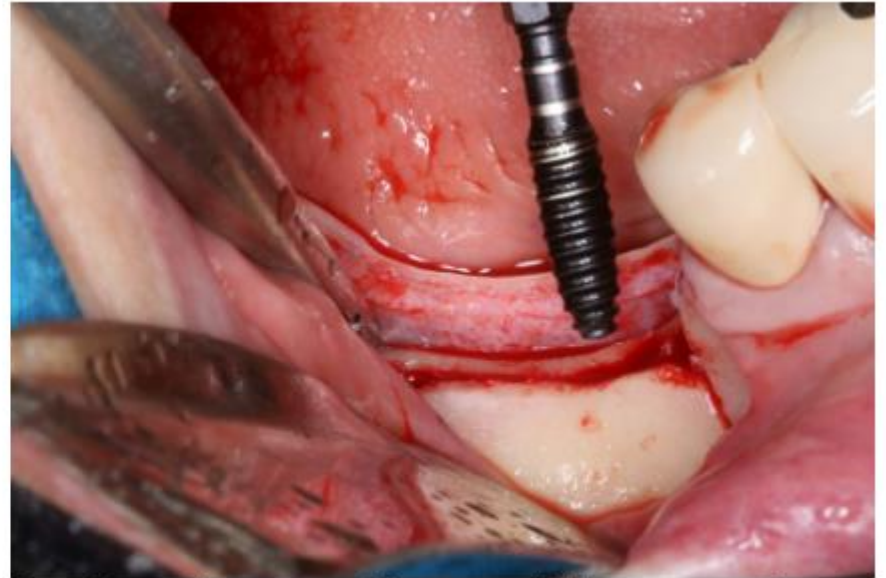
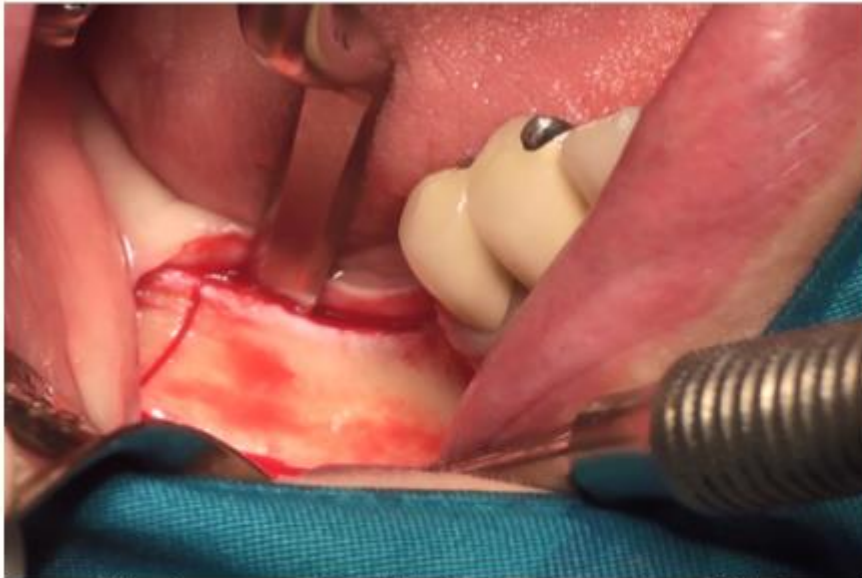
臨床病例



下面Cutting時 - 也使用**ø7.0, T1.0 Safe Disk**

## 骨擴寬手術盒(Ridge Wider Kit)

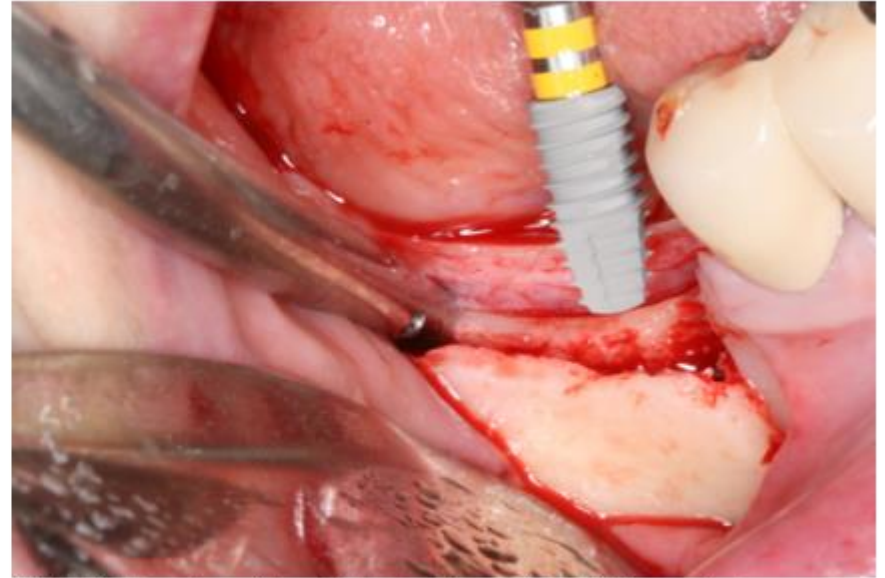
### 臨床病例



利用Bone Chisel 擴開已分裂的骨頭  
為了更讓骨頭擴開始使用Bone Expansion(tap drill)

骨擴寬手術盒(Ridge Wider Kit)

臨床病例

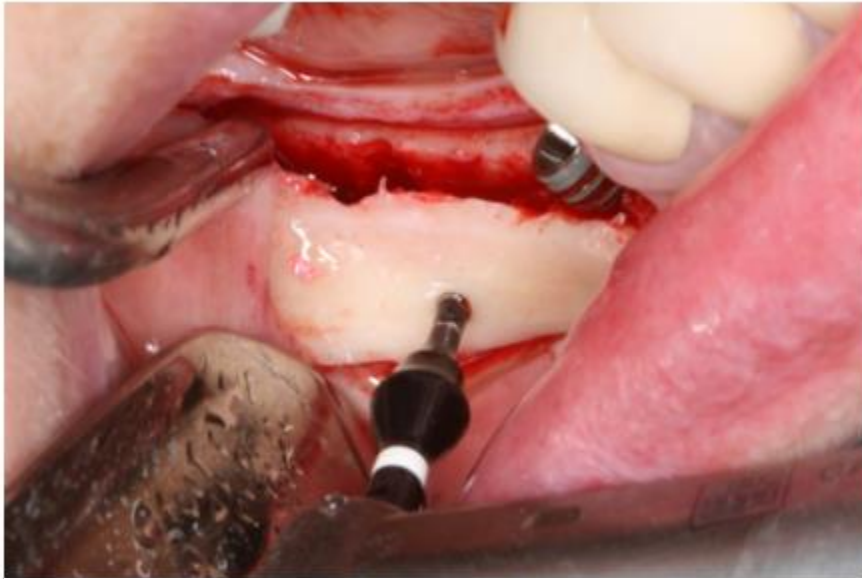


使用Bone expansion - 25~35rpm  
擴張的Bone中植入IS3植體



## 骨擴寬手術盒(Ridge Wider Kit)

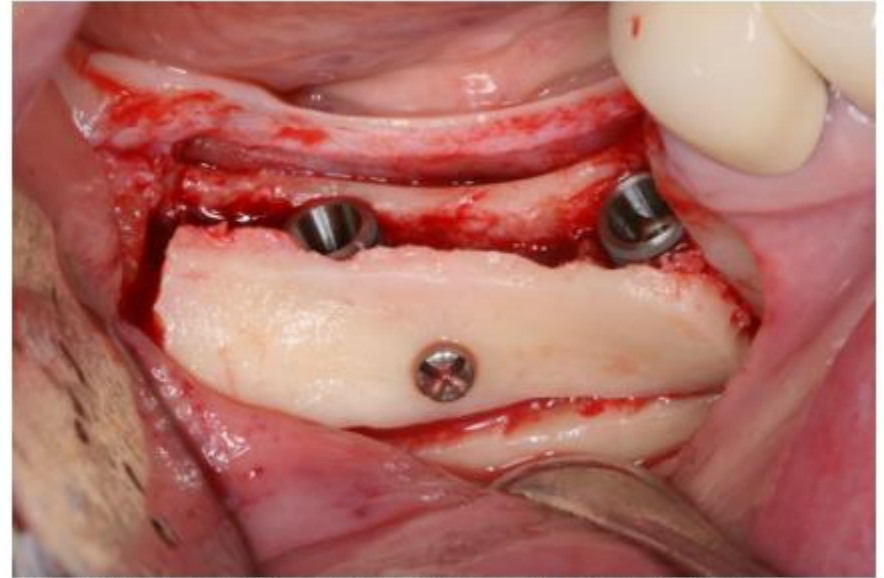
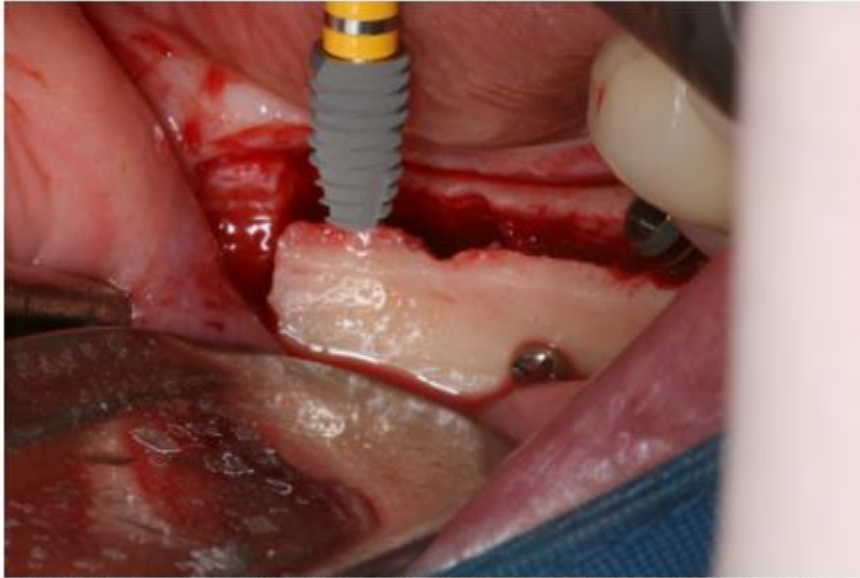
### 臨床病例



Buccal side 植入 Fixing screw(防止Bone張開)

骨擴寬手術盒(Ridge Wider Kit)

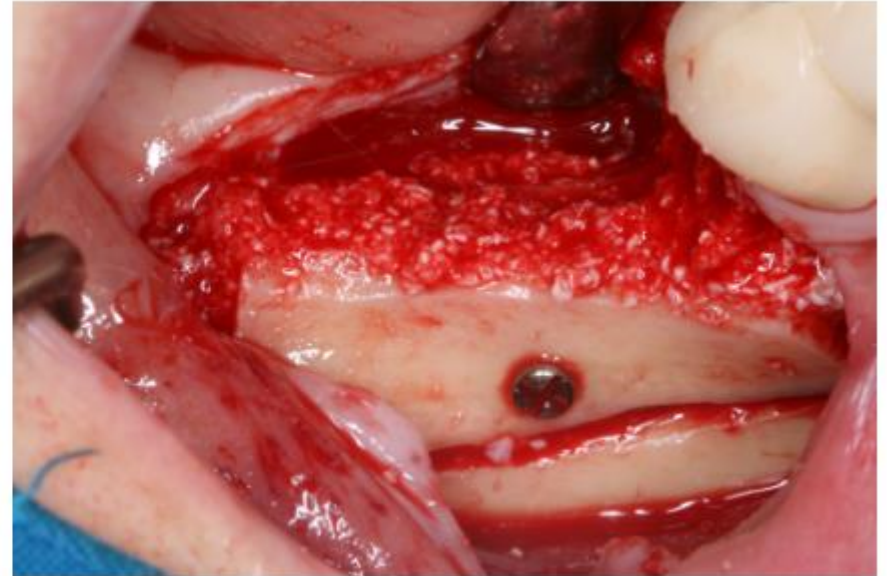
臨床病例



植入IS3植體  
初期固定力得到15Ncm

骨擴寬手術盒(Ridge Wider Kit)

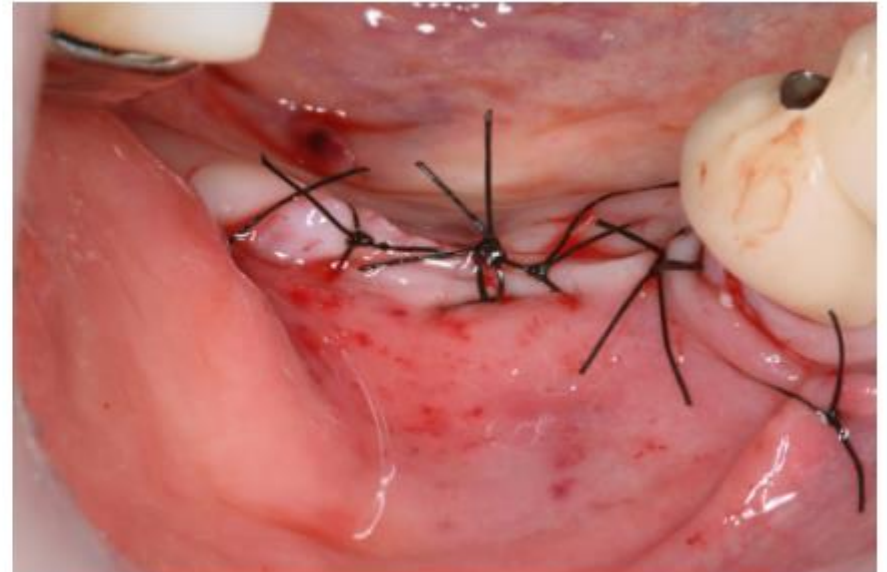
臨床病例



進行Bone graft

骨擴寬手術盒(Ridge Wider Kit)

臨床病例



使用吸收性Membrane / 牙齦縫合

**Thank you**